

DÉMOLITION & PROJET PROPOSÉ /
DEMOLITION & PROPOSED PROJECT

308 Victoria





MAISON ACTUELLE / CURRENT HOUSE



Façade avant / Front facade



Façade
latérale
gauche /
Left
facade



Façade
latérale
droite /
Right
facade



Façade arrière/ Back facade



Photos d'inspection / Inspection photos



Photo 1 : Éléments de charpente de bois noircis



Photo 2 : Éléments en béton armé fissurés



MAISONS VOISINES / ADJACENT HOUSES





306 Victoria



309 Victoria



307 Victoria



303 Victoria



36 Sunny Acres



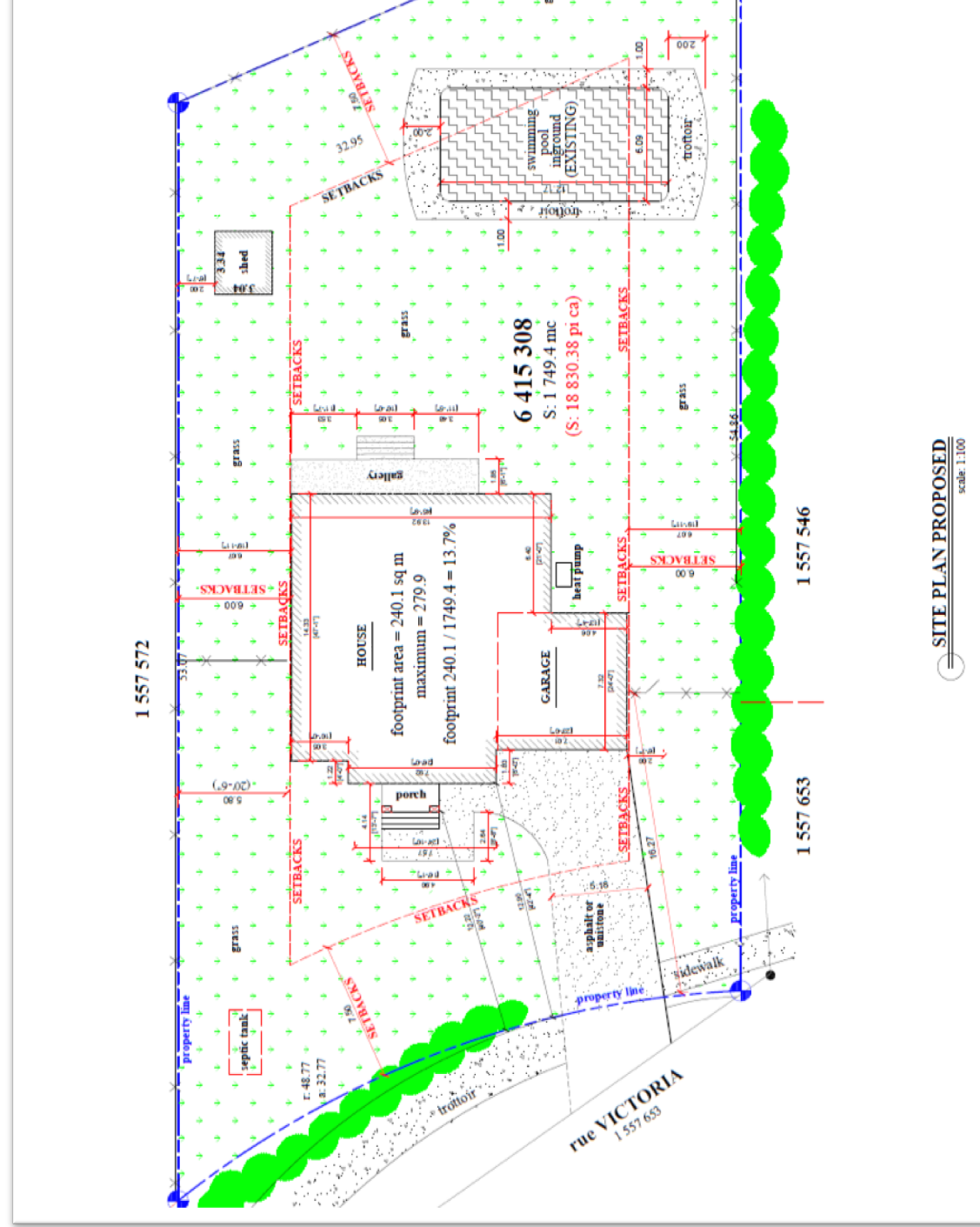
33 Sunny Acres



MAISON PROPOSÉE / PROPOSED HOUSE

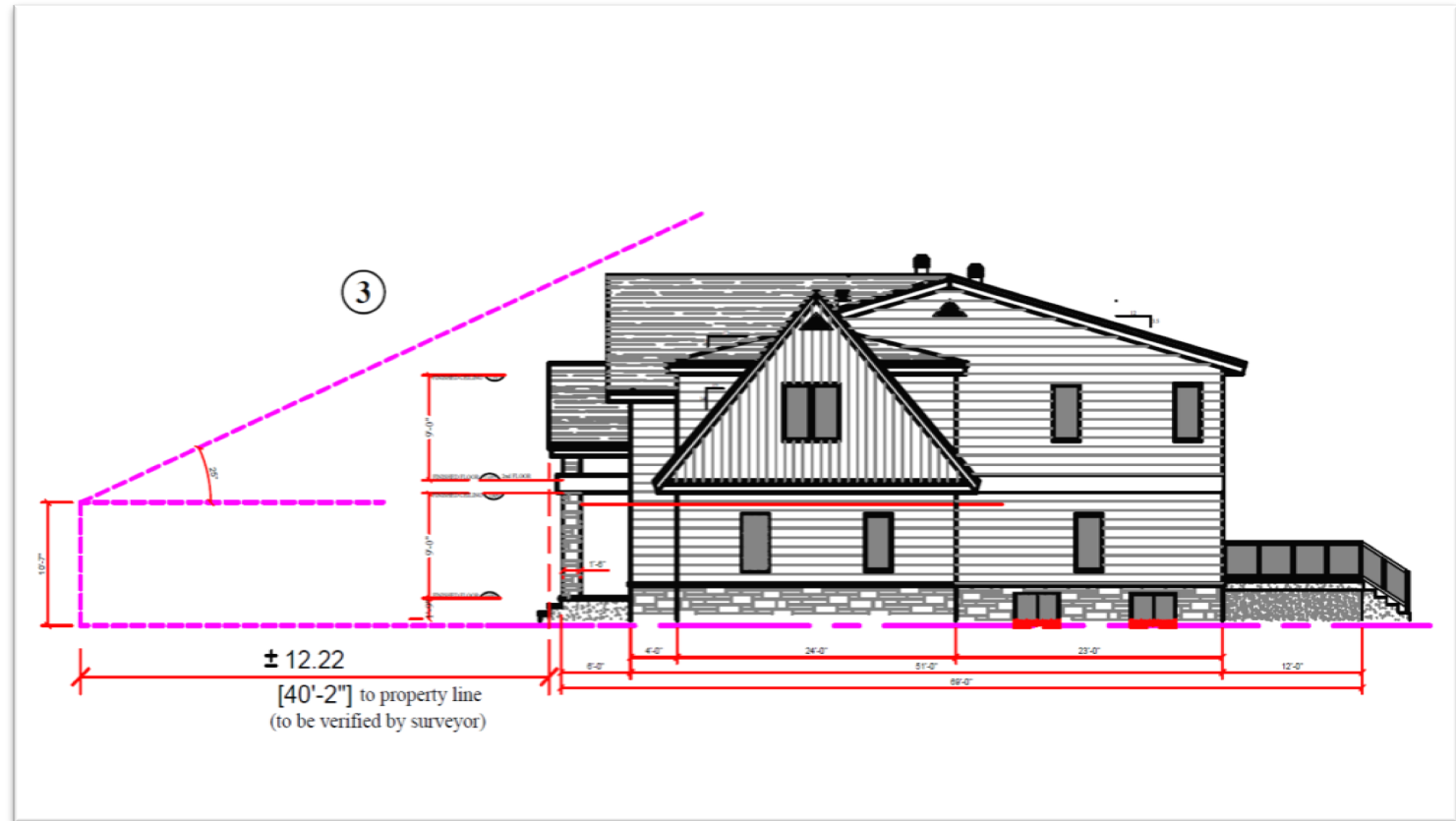


Plan d'implantation / Site plan



SITE PLAN PROPOSED
scale: 1:100

Hauteur / height



Zoning By-law checklist

ITEM	UNITS	PROPOSED	BY-LAW
Lot area	m ²	1749.4	1500 (min)
Land coverage ratio	%	13.6	16% (Max)
Net Floor area ratio (FAR)	%	23.9	24% (Max)
Diagonal	m	22.61	30% (Max)
Height	m	8.96	9 (max)
25 degrés / degrees		ok	

Zoning By-law checklist

SETBACKS	UNITS	PROPOSED	BY-LAW
Front setback	m	12.22	7.50 (min.)
Side setback (left)	m	6.31	4.5 (min.)
Side setback (right)	m	6.18	4.5 (min.)
Total side setbacks	m	12.49	12 (min.)
Rear setback	m	20.00	7.5 (min.)

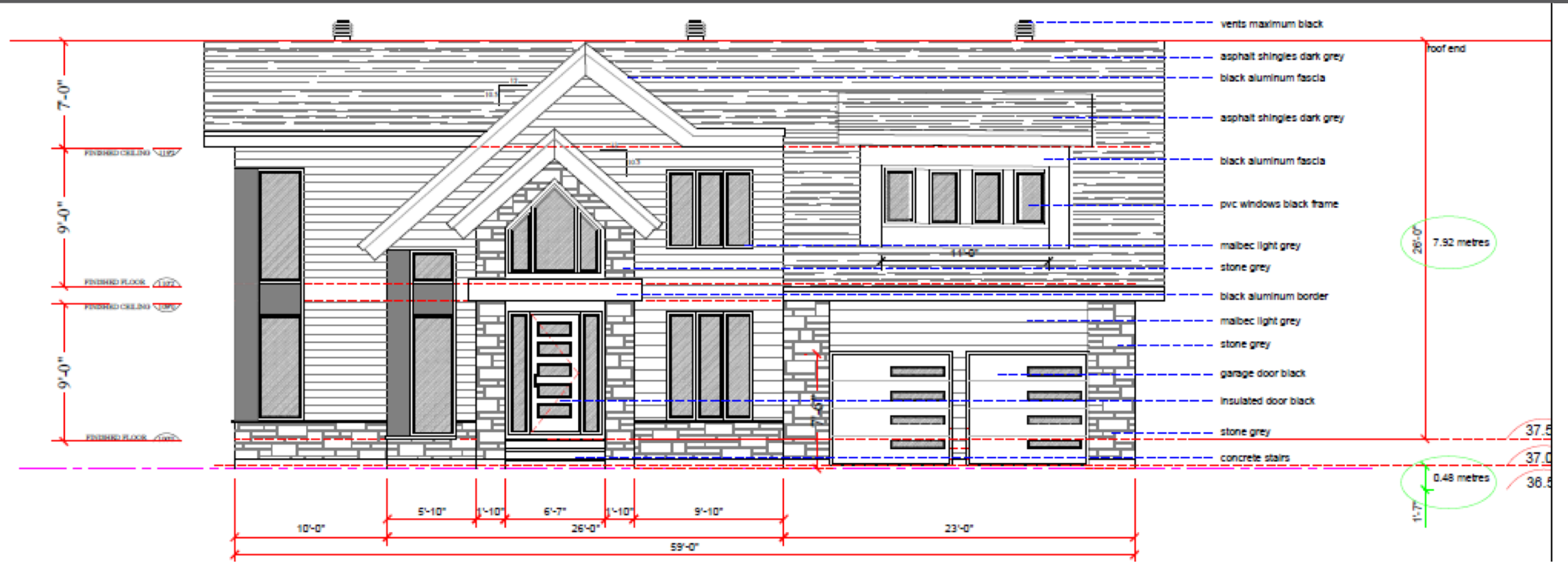
IMPERMEABLE MATERIAL	UNITS	PROPOSED	BY-LAW
Front	%	21.9	40% (max.)
Sides	%	1	50% (max.)
Overall lot	%	24.8	30% (max.)



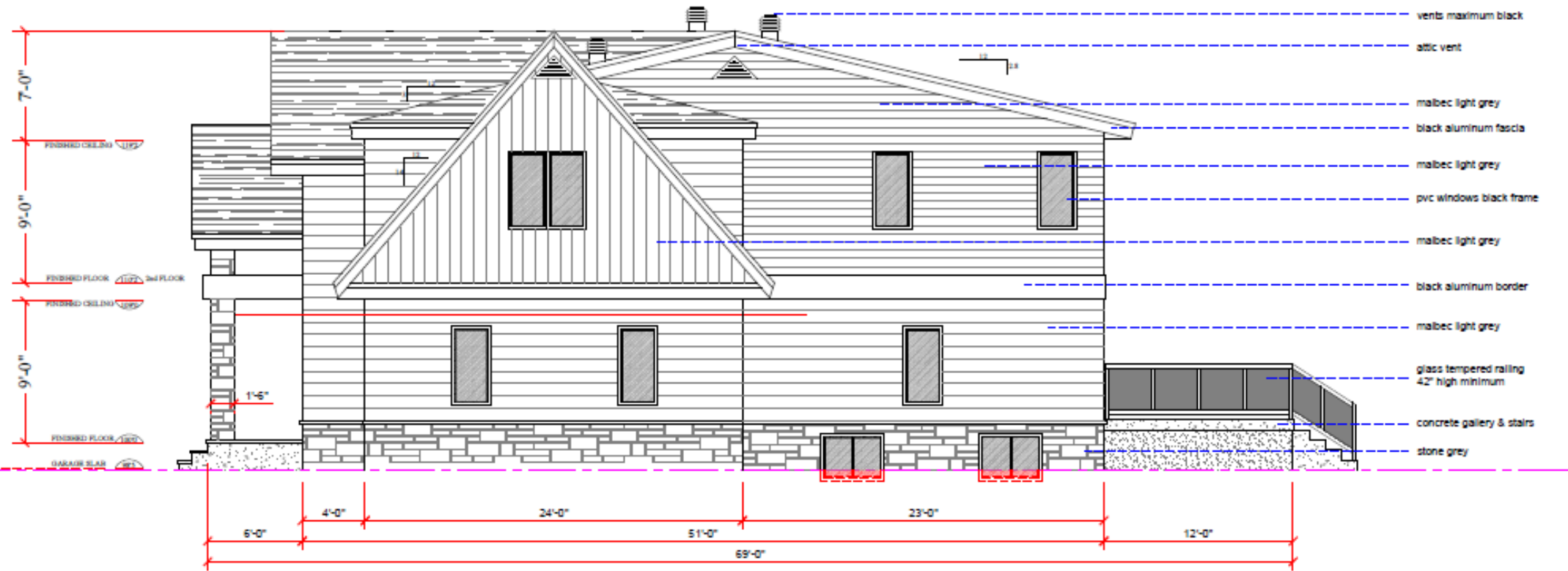
PLANS DES FAÇADES / FACADE PLANS



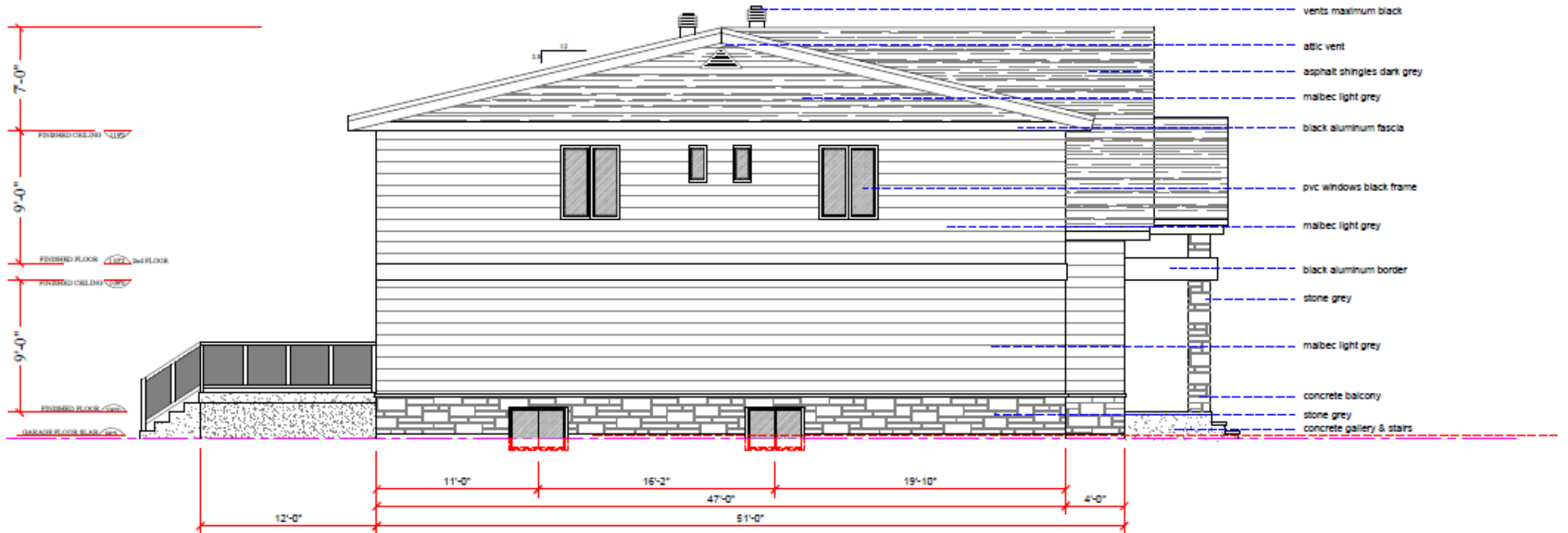
Façade avant / Front facade



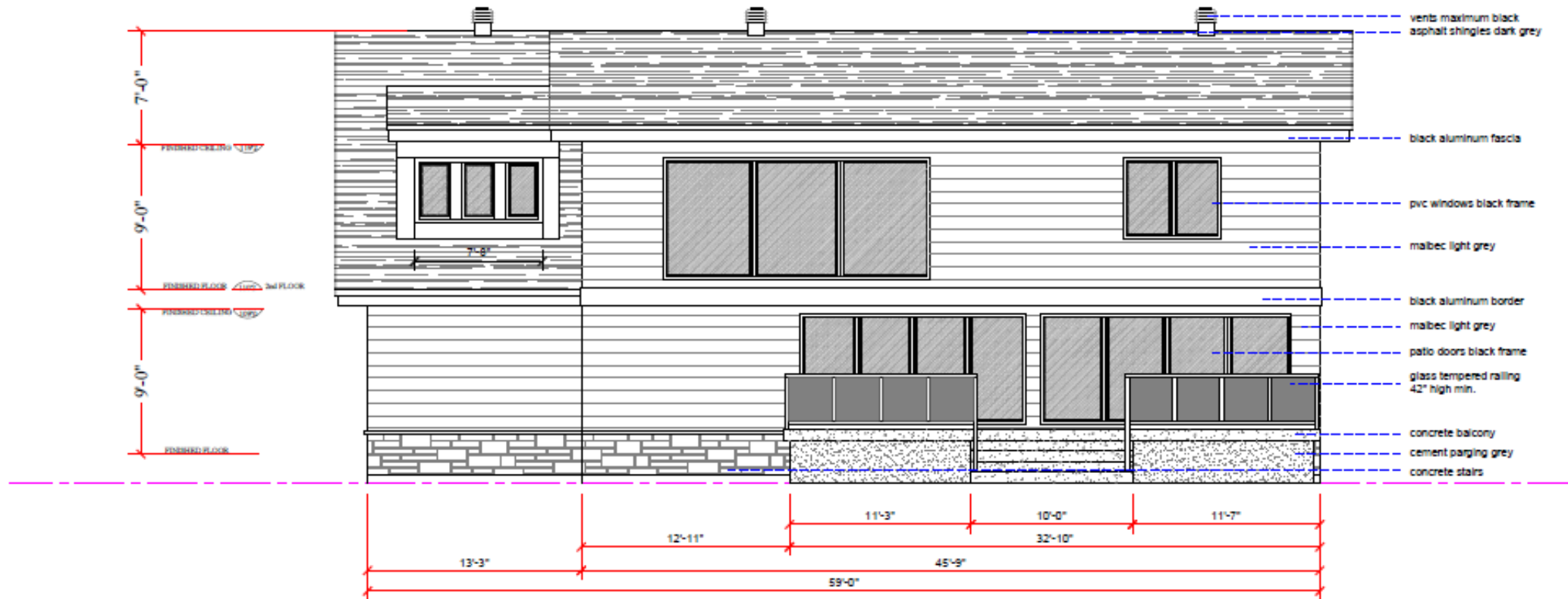
Façade latérale droite / Right facade



Façade latérale gauche / Left facade

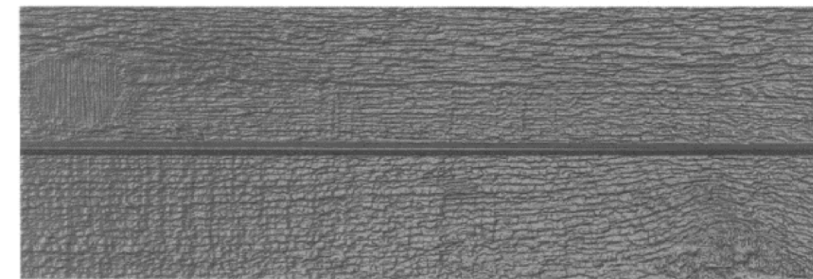
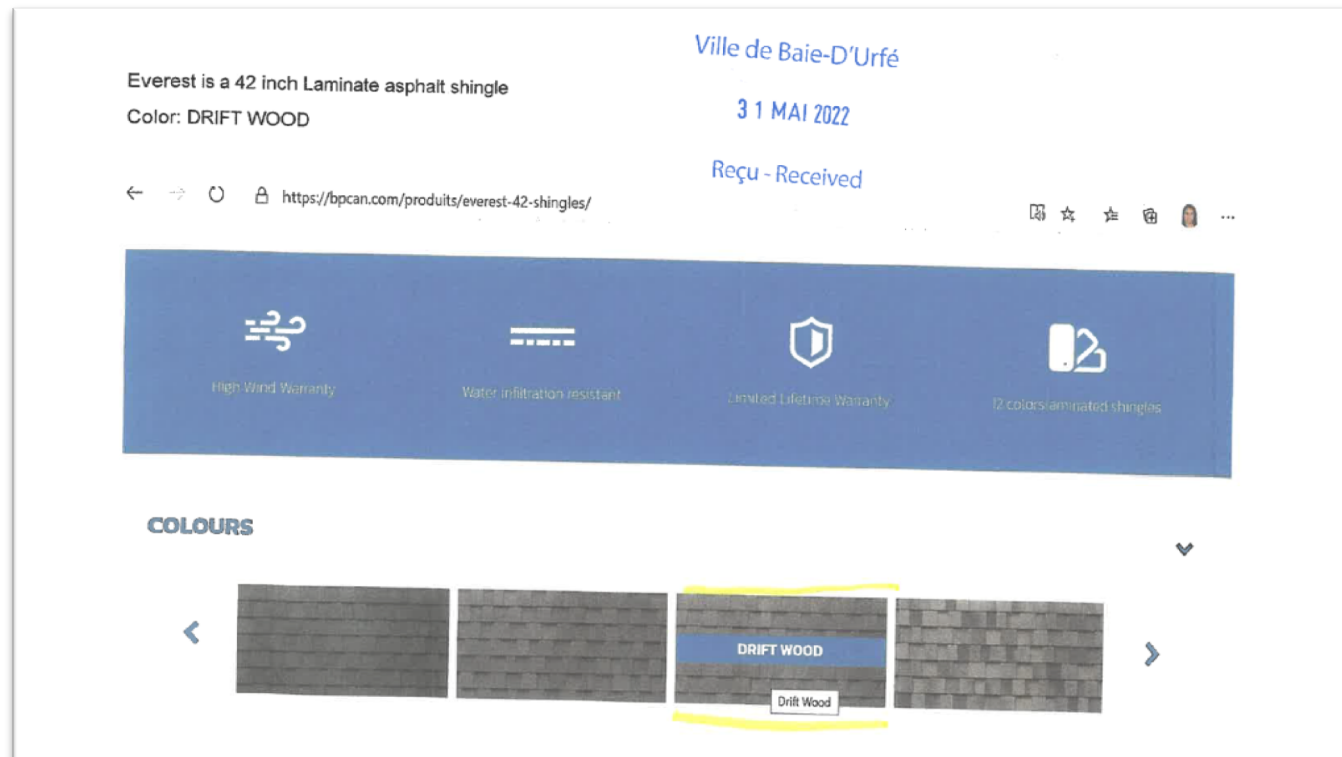


Façade arrière / Back facade




Bardeaux / Shingles

Revêtement extérieur / Siding



Portes, fenêtres et éclairage / Doors, windows and lighting

GARAGA



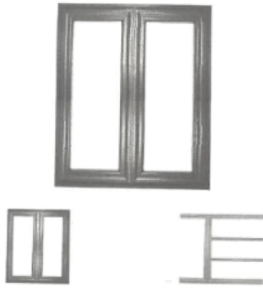
Standard+ Moderno Multi, 9' x 8', Chocolate Walnut

Details of Moderno Multi /
Moderno SSG design
Contemporary Style

★★★★★
3 Reviews

Ville de Baie-D'Urfé
31 MAI 2022
Reçu - Received

"Harmony" hybrid casement windows



Our "Harmony" hybrid casement windows come in a traditional version and a contemporary version featuring a sleeker design suitable for new architectural styles. They are made using a PVC-extruded aluminium composite that gives them superior strength and durability. They are energy efficient and ENERGY STAR certified, and they come with three integrated weather strips that multiply their insulating capacity and their resistance to corrosion, impact and surface scratches.

4 tips to reduce condensation on the windows during winter

United to Help Flood Victims


Getting your doors and windows ready for the winter

CERTIFIÉ
APCHA

Ville de Baie-D'Urfé
31 MAI 2022
Reçu - Received

Download the specs sheet

[Back to Outdoor Wall Lanterns](#)



LALUZ A03156 Exterior Light Fixtures Farmhouse Outdoor Wall Lantern in Black with Clear Glass for Porch Barn

Laluz [\(No Reviews\)](#)

\$124.54

This item is sold online only

Curbside pickup eligible*

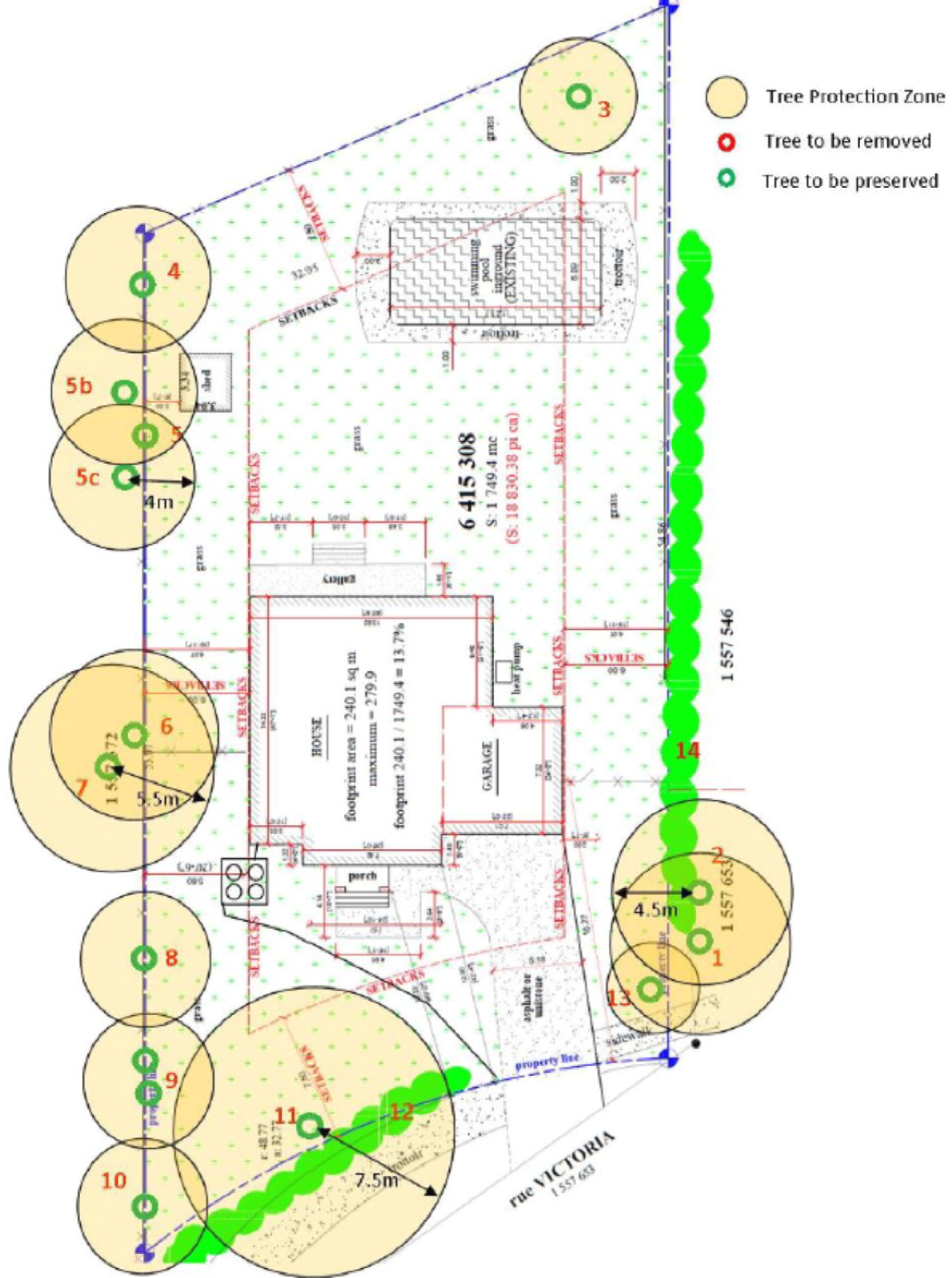
Free standard shipping

Arrives between Thu Dec 3 - Wed Dec 9

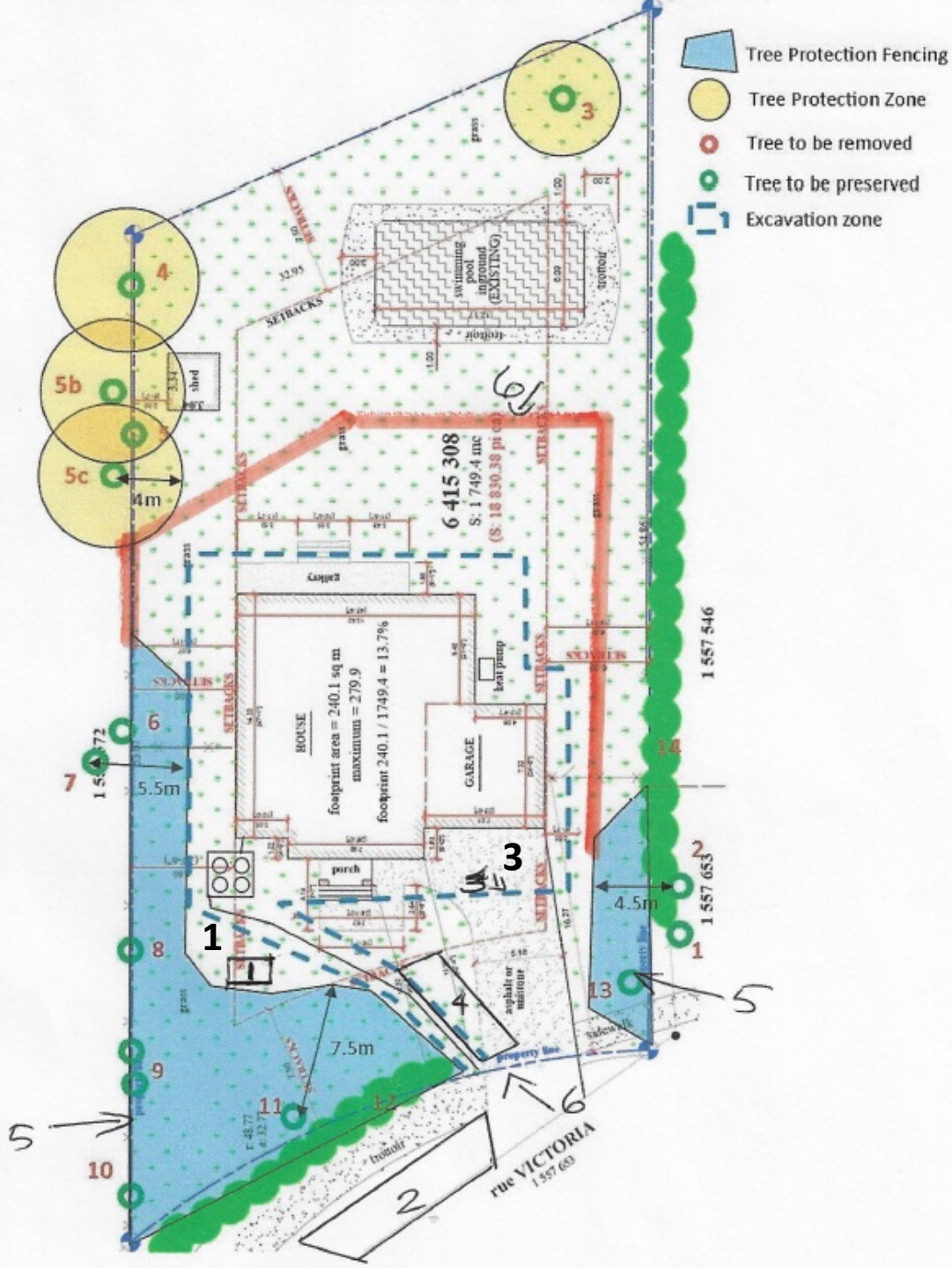
[More options & shipping options](#)

Ville de Baie-D'Urfé
31 MAI 2022
Reçu - Received

Add to cart Find in-store



Gestion des arbres Tree management



- 1- Toilette / Toilet
- 2- Stationnement / Parking
- 3- Excavation / Excavation
- 4- Dépôt des matériaux / Site storage
- 5- Protection des arbres / Trees protection
- 6- Clôture de protection / Protection fence

Plan de gestion du site et du système septique Site management plan and septic system