



**STRATEGY AGAINST THE EMERALD ASH BORER (EAB)
OF THE TOWN OF BAIE-D'URFÉ**

Emmanuelle Jobidon

Table of Contents

| | | |
|-------|---|----|
| 1. | INTRODUCTION | 3 |
| 1.1 | EMERALD ASH BORER | 3 |
| 1.2 | CURRENT SITUATION | 3 |
| 1.3 | BAIE-D'URFÉ AND THE EMERALD ASH BORER | 4 |
| 1.4 | EMERALD ASH BORER: ISSUES | 4 |
| 1.4.1 | COSTS AND LOSS OF ECOLOGICAL SERVICES..... | 4 |
| 1.4.2 | SOLUTIONS | 5 |
| 1.5 | BAIE-D'URFÉ'S OBJECTIVES..... | 5 |
| 1.5.1 | SLOW DOWN ASH MORTALITY WITHIN THE TOWN LIMITS | 5 |
| 1.5.2 | REDUCE COSTS CAUSED BY THE MASSIVE AND RAPID LOSS OF ASH TREES..... | 6 |
| 1.5.3 | ENSURING THE SAFETY OF RESIDENTS..... | 6 |
| 1.5.4 | MAINTAIN THE URBAN FOREST AND ITS BIODIVERSITY | 6 |
| 2. | TERRITORIAL ANALYSIS..... | 7 |
| 2.1 | GEOGRAPHY | 7 |
| 2.2 | TREE SPECIES DIVERSITY | 9 |
| 2.3 | ASH TREE INVENTORY..... | 10 |
| 2.3.1 | PUBLIC ASH TREE INVENTORY..... | 10 |
| 2.3.2 | PRIVATE ASH TREE INVENTORY..... | 12 |
| 2.4 | ASH TREE INVENTORY MAPPING | 18 |
| 3. | BAIE-D'URFÉ'S STRATEGY | 19 |
| 3.1 | INSECT DETECTION | 20 |
| 3.2 | INFORMATION AND AWARENESS CAMPAIGN..... | 21 |
| 3.3 | STRATEGY TO TREAT AND REMOVE ASH TREES FROM THE PUBLIC DOMAIN..... | 23 |
| 3.3.1 | STRATEGY TO TREAT ASH TREES LOCATED ON THE PUBLIC DOMAIN..... | 24 |
| 3.3.2 | STRATEGY TO REMOVE ASH TREES LOCATED ON THE PUBLIC DOMAIN..... | 24 |
| 3.4 | STRATEGY TO TREAT AND REMOVE ASH TREES FROM PRIVATE PROPERTY | 25 |
| 3.5 | ADOPTION OF A BY-LAW FOR PRIVATE PROPERTIES | 27 |
| 3.6 | MANAGEMENT OF ASH TREE WASTE | 27 |
| 3.6.1 | MANAGEMENT OF ASH TREE WASTE IN THE PUBLIC DOMAIN..... | 27 |
| 3.6.2 | MANAGEMENT OF ASH TREE WASTE FROM PRIVATE PROPERTY | 27 |
| 3.7 | POTENTIAL USE OF ASH WOOD | 28 |
| 3.8 | REPLACEMENT OF FELLED TREES..... | 28 |
| 3.8.1 | REPLACEMENT OF FELLED PUBLIC ASH TREES | 28 |
| 3.8.2 | REPLACEMENT OF FELLED PRIVATE ASH TREES | 29 |
| 3.9 | RESEARCH AND DEVELOPMENT..... | 30 |
| | APPENDIX 1 | 31 |
| | APPENDIX 2 | 33 |
| | APPENDIX 3 | 34 |

1. INTRODUCTION

1.1 EMERALD ASH BORER

The emerald ash borer is an invasive exotic insect from Asia that attacks all ash species in our region. On average, a healthy ash tree, when infested with the pest, will be destroyed in five to seven years (McCullough & Katovich, 2004). The damage is caused by larva of the insect creating S-shaped galleries under the bark. The emerald ash borer was first observed in North America in Detroit in 2002. In Québec, it was initially discovered in 2008 in Carignan. Montreal followed in 2011. Since that time, the spread has continued in southern Québec (ACIA, 2014).

The ash tree (*Fraxinus spp*) is highly appreciated for landscape design. Due to its adaptability to urban conditions, it has been frequently planted in cities over the last decades. Most ash species are indigenous to Quebec. At maturity, the tree can reach 15 to 20 metres. A rapid grower, the ash adapts to many soils, resists disease and de-icing salts and is easy to maintain. (Laird Farrar, 2012)

1.2 CURRENT SITUATION

Since it was first discovered in Québec in Carignan in 2008, the emerald ash borer has been found in about 20 municipalities. On September 18, 2015, the Communauté métropolitaine de Montréal adopted an Emerald Ash Borer Strategy “...designed to ensure metropolitan coordination, complementing actions by municipalities, in order to increase the effectiveness in Greater Montréal of the response to this insect pest, which is currently increasing substantially.” [translation]

The Canadian Food Inspection Agency (CFIA) has been following the development of the pest since it arrived in Canada. The Agency’s role is to prevent the emerald ash borer from spreading to other regions and countries. CFIA has decreed a regulated area which limits the movement of a wood of any ash species (wood blocks, branches, trunks, roots, boards, cultivated trees, firewood of any species, etc.) The updated regulated area came into effect on April 1, 2014. A map showing this zone can be found in Appendix 1 of this document.

1.3 BAIE-D'URFÉ AND THE EMERALD ASH BORER

- The insect was first detected in the Municipality on July 23, 2014 in a pheromone trap located at 42 rue Lakeview.
- The Municipality has been carrying out trapping and debarking since 2014.
- The Municipality first detected an affected tree on October 3, 2014, on chemin Morgan.

The tree did not show any symptoms, the insect was detected through debarking. The branch in which the emerald ash borer was detected had fallen after a wind storm.

Since then, three other infestations have been discovered. The four infestation areas are:

1. Chemin Morgan - 2 infested trees
 2. Rue Oxford - 1 infested tree
 3. Rue Cambridge - 1 infested tree
- The Municipality has inventoried ash trees on private property as well as in the public domain.

1.4 EMERALD ASH BORER: ISSUES

1.4.1 COSTS AND LOSS OF ECOLOGICAL SERVICES

The arrival of the emerald ash borer in a region has negative consequences for the environment, the economy and citizens. For a municipality, the main consequences of the ash borer infestation will be loss of the tree canopy, increased annual costs for tree removal wood disposal and tree replacement, as well as decreased property values and a negative impact on the aesthetic character of the Town. For the community, the loss in ecological services provided by the trees will also be significant, since trees help to:

- Improve urban air quality
- Support biological diversity
- Limit soil erosion
- Improve water quality
- Fight against the urban heat island effect
- Reduce extreme temperatures and winds
- Improve quality of life (social life, landscapes)
- Promote better human health.

The most striking loss will undoubtedly be the transformation of the landscape. Many public and private spaces will be radically transformed when ash trees are lost.

In rural regions, forests dominated by ash trees will suffer major losses and the tree canopy will open up significantly. If regenerative species are already abundantly established in the underbrush, this increase in light will promote diversified reforestation. However, if this is not the case, light-loving plants such as raspberries and other opportunistic species such as buckthorn (*Rhamnus cathartica*) or Japanese knotweed (*Fallopia japonica*), may invade the space.

FIGURE 1 - CITY OF TOLEDO, OHIO



This figure shows how the landscape in Toledo, Ohio was transformed after the ash borer spread through a street monoplanted in ash trees. The first photograph was taken in 2006, while the second dates from 2009.

1.4.2 SOLUTIONS

It is important to understand that as of now, no “miracle” method to eradicate the emerald ash borer exists. However, it is possible to slow tree mortality, which slows infestation. A combination of methods (treatment, trap trees, Slow Ash Mortality or SLAM) makes this possible. These methods delay some of the costs of felling and replacing ash trees, while conserving some trees for a certain period of time, during which replacements can be grown.

1.5 BAIE-D’URFÉ’S OBJECTIVES

1.5.1 SLOW DOWN ASH MORTALITY WITHIN THE TOWN LIMITS

The first objective is to conserve a part of the urban landscape of ash trees long enough to allow for replacement trees to be planted and grown. Moreover, prior to that time, it is hoped that research will develop more effective solutions to control the insect. Several steps can be taken to help slow tree mortality. They include: detecting the insect; identifying infested areas; eliminating a portion of the borer population, both adult and larval (insecticide); neutralizing infestation sites and eliminating ash trees in poor health.

1.5.2 REDUCE COSTS CAUSED BY THE MASSIVE AND RAPID LOSS OF ASH TREES

Slowing down ash mortality will delay a portion of the expenditures required to remove and replace trees and apply insecticide treatments. This delay also offers the possibility of benefiting from the ecological services provided by ash trees for a longer time and permits the landscape to change more gradually. In addition, when infestation becomes severe and the need to fell trees explodes, a lack of qualified personnel can cause removal costs to skyrocket. Spreading tree removal operations over time can provide substantial savings.

1.5.3 ENSURING THE SAFETY OF RESIDENTS

A dead tree is dangerous! It is a public safety problem in addition to being costly to remove. The risk of falling branches is significant and must be taken into account, as is the threat to hydroelectric and telecommunication networks. Moreover, ensuring that it is possible to obtain the services of tree removal workers during a crisis situation, when the existing teams and subcontractors will not be able to handle the work load, is essential.

1.5.4 MAINTAIN THE URBAN FOREST AND ITS BIODIVERSITY

The biological diversity of ecosystems is extremely important, because it ensures their productivity, stability, and their continued provision of services and functions to human society. This rule applies as much in the urban setting as in the suburban. Municipalities are directly concerned, because they help protect natural areas and the environment, are responsible for managing land within their jurisdiction and are empowered to organize its development. They are the key players with regard to the community. Many municipal administrations have adopted objectives to increase tree canopy in their jurisdiction. Consequently, it is important to establish measures to promote biodiversity and counteract canopy loss caused by the emerald ash borer.

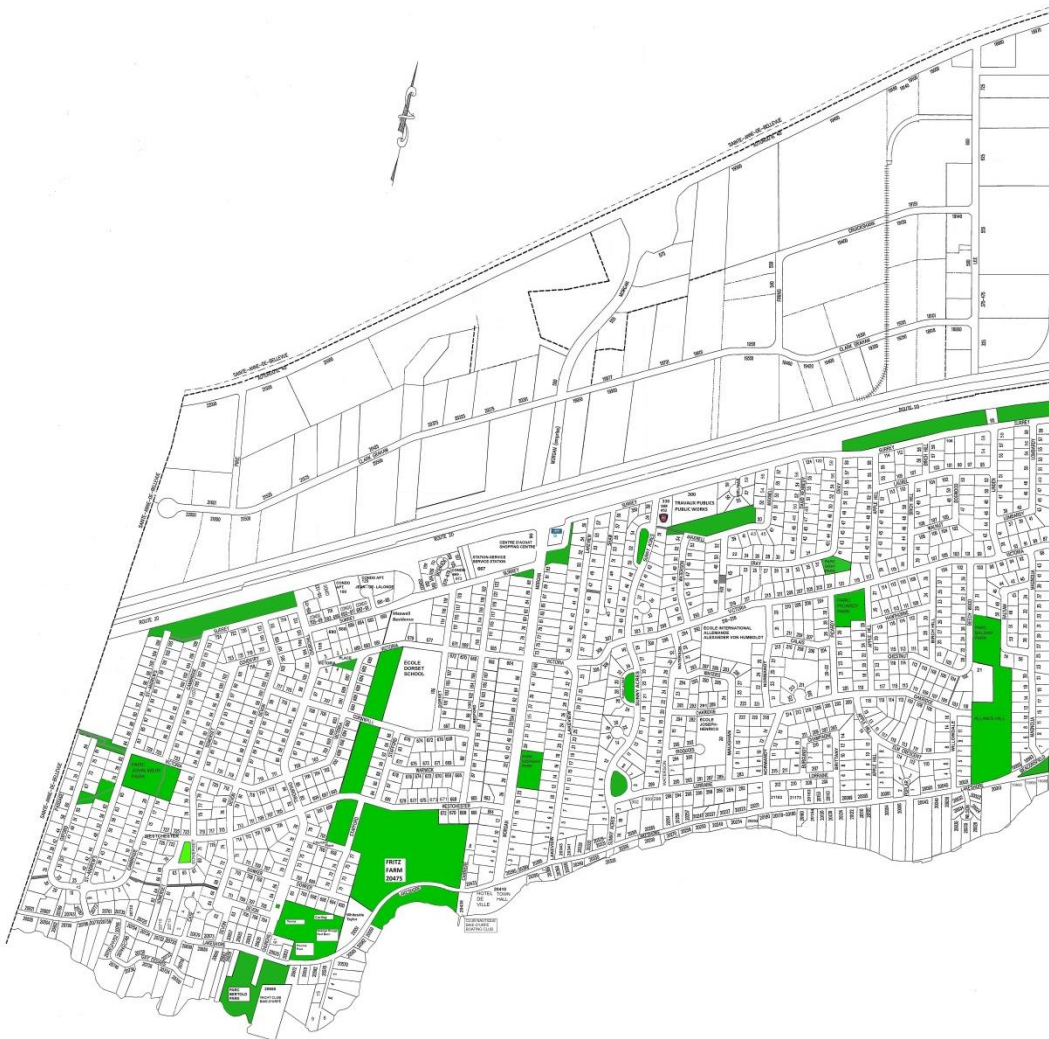
The tree canopy, i.e., upper levels of foliage, creates shade and also absorbs dust and many types of air pollutants. In 2013, the Montreal municipal administration presented the results of its 2011 study on the extent of tree canopies in all the cities and boroughs of the island of Montreal. In 2011, the Montreal Agglomeration had a tree canopy index of 20.3%, that is, 20.3% of its area was shaded. Between now and 2025, the Agglomeration wants to increase this rate to 25% and suggests that all its municipalities and boroughs reach this objective as well. According to the study, the Baie-D'Urfé tree canopy index was 32.52% in the residential sector, while the rate in the industrial sector was 9.80%.

The Town of Baie-D'Urfé covers an area of 6.03 square kilometres. It is bisected by Autoroute 20 and has two quite different sections. South of Autoroute 20 is the residential district while the industrial sector is to the north. The northern boundary of the industrial sector is Autoroute 40.

TABLE 2 - GEOGRAPHY OF THE TOWN OF BAIE-D'URFÉ

| Town geography | |
|--|----------------------|
| Land area | 6.03 km ² |
| North-south distance (at its maximum) | 3.56 km |
| East-west distance (measured at maximum) | 3.02 km |

FIGURE 3 - MAP OF THE TOWN OF BAIE-D'URFÉ

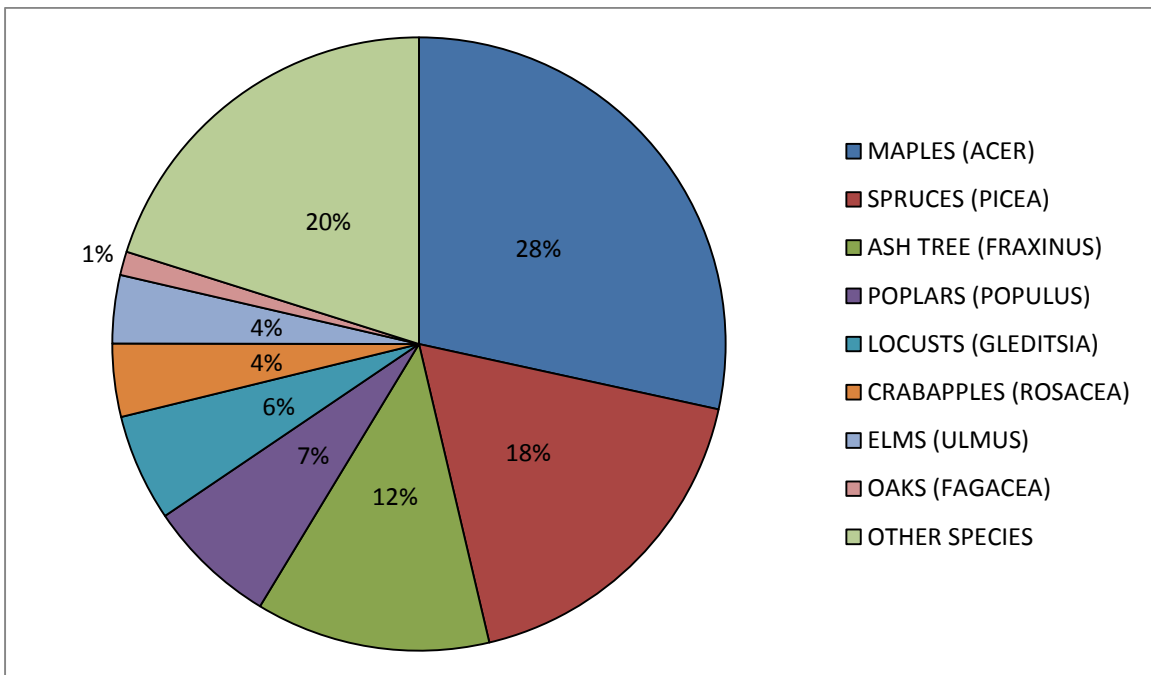


This map presents the Town of Baie-D'Urfé and its particular geography. The residential district is the area to the south of Autoroute 20 and the industrial sector is to the north of Autoroute 20 and bounded by Autoroute 40. The green areas indicate parks and woods.

2.2 TREE SPECIES DIVERSITY

In 2012, the Town of Baie-D'Urfé undertook a partial inventory of trees located within its boundaries. Analysis of tree species demonstrated it would be possible to increase species diversity in tree planting. The following figure lists the principal types of trees:

FIGURE 4 - TREE SPECIES DIVERSITY WITHIN BAIE-D'URFÉ TOWN LIMITS



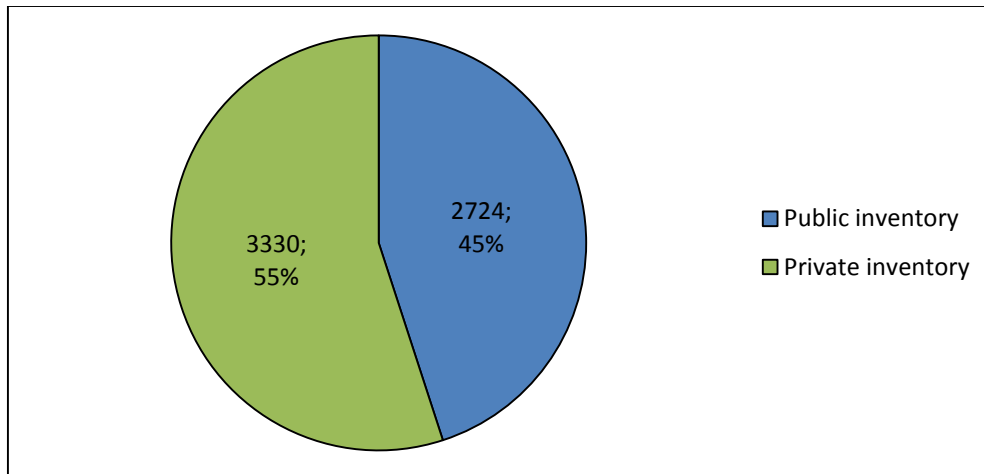
This figure indicates that 80% of trees in Baie-D'Urfé are of only eight different species. These statistics demonstrate that should another ecological catastrophe targeting one species in particular occur, the Baie-D'Urfé tree canopy could be significantly reduced. The figure especially demonstrates the importance of varying the tree species planted within the jurisdiction over the coming years.

2.3 ASH TREE INVENTORY

The Town of Baie-D'Urfé undertook a complete inventory of ash trees during 2014. By the end of August 2014, 6117 ash trees were recorded within the Town boundaries. Since then, 62 of these trees were removed for public safety reasons other than infestation and one due to infestation.

As of January 31, 2015, the Municipality had a total of **6054** ash trees. They are recorded in two different inventories, i.e. the inventory of ash tree located on public property and setbacks, and the private property inventory. Baie-D'Urfé has 2724 public ash trees and 3330 private.

FIGURE 5 - INVENTORY OF ASH TREES IN BAIE-D'URFÉ (JANUARY 2015)



This figure presents the Baie-D'Urfé ash inventory. Fifty-five percent of the ash trees are located on private land while 45% are on public property and setbacks.

2.3.1 PUBLIC ASH TREE INVENTORY

As of January 31, 2015, **2724** public ash trees were inventoried. These trees are in two large separate sectors, the residential sector and the industrial. Ash trees in the two sectors were further classified into four categories:

1. Ash trees treated in 2014
2. Ash trees to treat in 2015
3. Non-treatable ash trees
4. Ash trees located in wooded areas

In order to determine if a tree can be treated or not, three criteria were used by the Municipality:

1. Be in good condition, i.e. 70% or more of the tree is healthy. This criterion was evaluated via the public tree inventory produced by *Nadeau Foresterie* in 2012.
2. Have no possibility of interference with Hydro-Québec lines.
3. Have a diameter of 25 cm or more (circumference of 78.5 cm)

Based on these criteria, 247 ash trees could be treated. Of these 247, 27 trees were removed because they are not a great ornamental value for the Town.

The following table shows the detailed results of this sorting of trees on the public ash tree inventory.

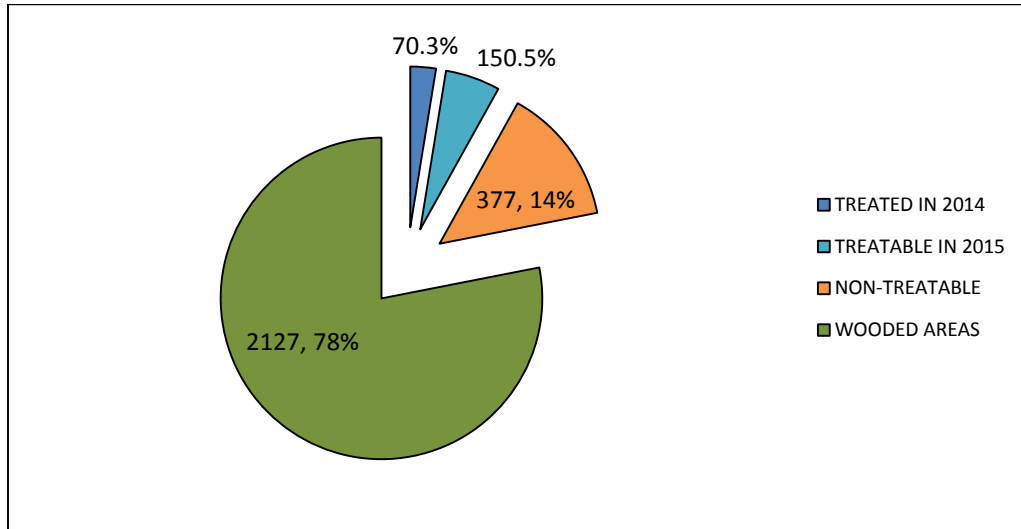
TABLE 3 - INVENTORY OF PUBLIC ASH TREES (JANUARY 2015)

| CATEGORY | NUMBER |
|---------------------------------|-------------|
| RESIDENTIAL SECTOR | |
| TREATED IN 2014 | 70 |
| TREATABLE LATER | 149 |
| NON-TREATABLE | 358 |
| WOODED | 2042 |
| | |
| RESIDENTIAL SECTOR TOTAL | 2619 |
| | |
| INDUSTRIAL SECTOR | |
| | |
| TREATED IN 2014 | 0 |
| TREATABLE LATER | 1 |
| NON-TREATABLE | 19 |
| WOODED | 85 |
| | |
| INDUSTRIAL SECTOR TOTAL | 105 |
| | |
| PUBLIC INVENTORY TOTAL | 2724 |

This table presents all ash trees located on public property by category. It provides the reader with an overall view of the situation regarding the inventory of public ash trees in Baie-D’Urfé. Please note that numbers are estimates because the wooded inventory was only approximate. It includes trees located on lot 1 557 261, which belongs to the Québec transportation department (MTQ), since the Town is negotiating to purchase this property.

In terms of percentage: 78% of public ash trees are in the woods. The Town has decided to treat about 37% of the 22% of the public ash trees not located in wooded areas. The following graphic presents the distribution of the trees.

FIGURE 6 - CATEGORIZATION OF PUBLIC ASH TREES (JANUARY 2015)



2.3.2 PRIVATE ASH TREE INVENTORY

In 2014, the Town conducted an inventory of ash trees located on private land in Baie-D'Urfé. The inventory was conducted by members of the administration but also with the help of volunteers who surveyed the Town's 1357 residential properties and 91 private industrial properties (1448 properties in all). The 27 volunteers were known as the *Baie-D'Urfé Ash Squad*.

FIGURE 7 - THE BAIE-D'URFÉ ASH SQUAD.



The Town of Baie-D'Urfé provided uniforms for the volunteers, identified by the *Ash Squad* logo, specially created for the occasion.

FIGURE 8 - THE BAIE-D'URFÉ ASH SQUAD LOGO



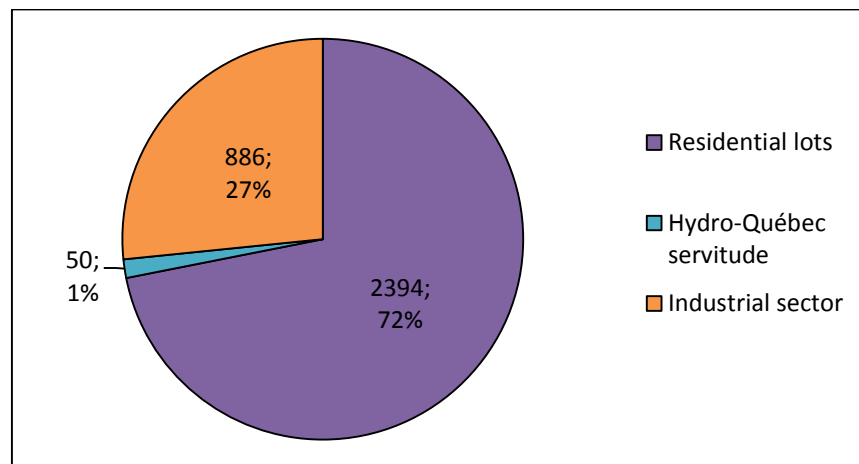
In total, as of August 2014, 3369 ash trees were inventoried on private property. Since then, 39 ash trees were cut down, for reasons other than infestation. Consequently, as of January 31, 2015, **3300** ash trees on private property are in the inventory, classified as follows:

TABLE 4 - INVENTORY OF PRIVATE ASH TREES (JANUARY 2015)

| Category | Number | Comments |
|------------------------|--------|-------------|
| Residential properties | 2394 | |
| Hydro-Québec servitude | 50 | Approximate |
| Industrial sector | 886 | |
| Grand Total | 3330 | |

In terms of percentages: 72% of ash trees located on properties in the residential sector, 1% are in the Hydro-Québec servitude, and 27% can be found on properties in the industrial sector. The following graphic presents the tree distribution.

FIGURE 9 - PRIVATE TREE INVENTORY: PERCENTAGES (JANUARY 2015)

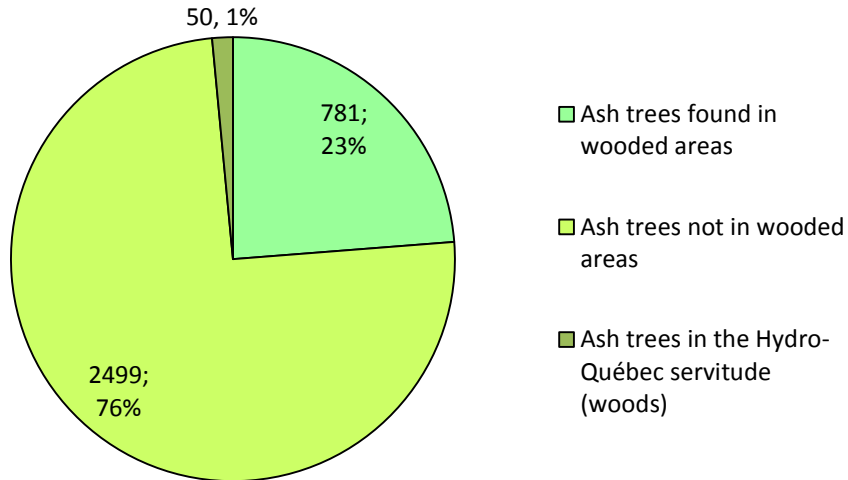


Here is how private ash trees are distributed in woodlands:

TABLE 5 - DISTRIBUTION OF PRIVATE ASH TREES IN WOODED AREAS (JANUARY 2015)

| | |
|--|-----|
| TOTAL NUMBER OF TREES LOCATED IN WOODLANDS | 781 |
| NUMBER OF ASH TREES IN RESIDENTIAL-SECTOR WOODED – VACANT LOTS | 86 |
| NUMBER OF ASH TREES IN INDUSTRIAL-SECTOR WOODED - VACANT LOTS AND OCCUPIED LOTS WITH MORE THAN 25% FOREST COVERAGE | 695 |

FIGURE 10 - WOODED ASH TREE DISTRIBUTION ACCORDING TO THE PRIVATE ASH TREE INVENTORY (JANUARY 2015)



This figure demonstrates that the wooded areas, including those on the Hydro-Québec servitude, represent 24% of the private ash tree inventory.

A total of 2499 private ash trees located on non-forested properties were counted (2347 in the residential sector and 152 in the industrial). The following tables present the number of ash trees per property.

TABLE 6 - DISTRIBUTION OF 2347 ASH TREES IN THE PRIVATE RESIDENTIAL INVENTORY - EXCLUDING THOSE LOCATED IN WOODED AREAS (JANUARY 2015)

| NUMBER OF ASH TREES | NUMBER OF PROPERTIES |
|---------------------|----------------------|
| 0 | 890 |
| 1 | 175 |
| 2 | 73 |
| 3 | 53 |
| 4 | 22 |
| 5 | 30 |
| 6 | 18 |
| 7 | 11 |
| 8 | 8 |
| 9 | 11 |
| 10 | 4 |
| 11 | 9 |
| 12 | 7 |
| 13 | 4 |
| 14 | 8 |
| 15 | 2 |
| 16-24 | 16 |
| 25 and more | 14 |

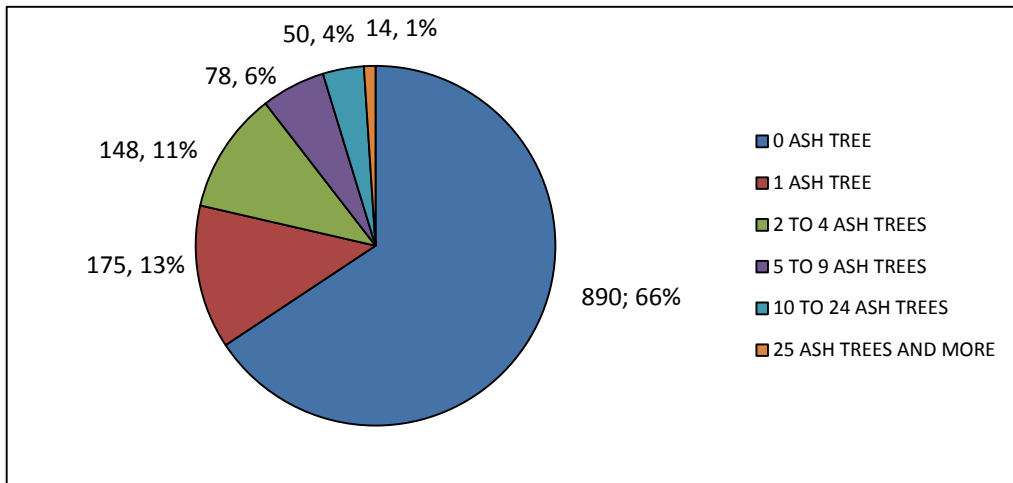
This table shows that 890 residences (66%) without wooded areas have no ash tree on their properties. Also, 34% of non-wooded residential lots have at least one ash tree.

TABLE 7- DISTRIBUTION OF 152 ASH TREES IN THE PRIVATE INDUSTRIAL INVENTORY - EXCLUDING THOSE LOCATED IN WOODED AREAS (JANUARY 2015)

| NUMBER OF ASH TREES | NUMBER OF PROPERTIES |
|---------------------|----------------------|
| 0 | 55 |
| 1 | 3 |
| 2 | 2 |
| 3 | 1 |
| 4 | 2 |
| 5 | 0 |
| 6 | 0 |
| 7 | 1 |
| 8 | 2 |
| 9 | 0 |
| 10 | 3 |
| 11 | 1 |
| 12 | 1 |
| 13 | 0 |
| 14 | 1 |
| 15 | 0 |
| 16-24 | 1 |
| 25 and more | 1 |

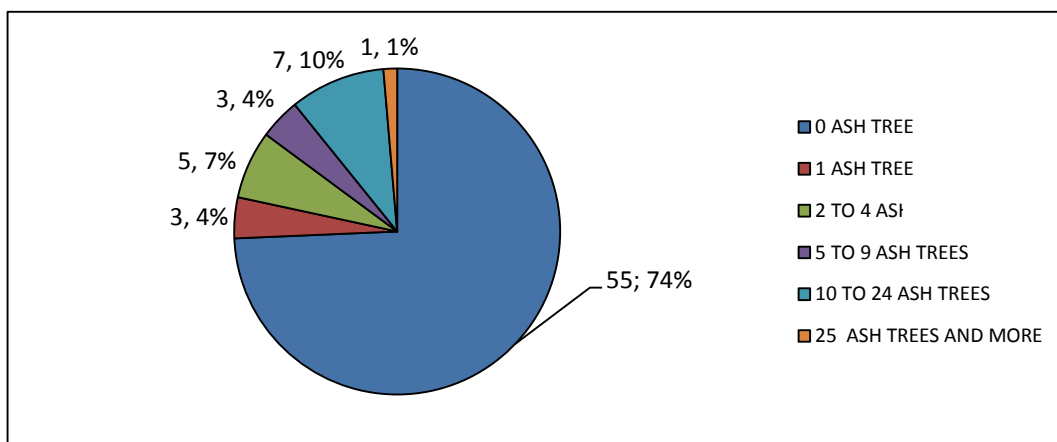
This table shows that 55 industrial properties (74%) without wooded areas have no ash trees. Also, 26% of non-wooded industrial lots have at least one ash tree.

FIGURE 11 – ASH TREE DISTRIBUTION IN THE RESIDENTIAL SECTOR, PRIVATE INVENTORY – EXCLUDING ASH TREES LOCATED IN WOODED AREAS (JANUARY 2015)



This figure demonstrates that 66% of non-wooded residential properties are not affected by the ash borer problem since no ash trees grow on these private properties. However, it must be noted that this does not mean none of the residences have any ash trees in front of their properties, in the public servitude area. The figure also shows that in total, almost 11% of non-wooded residential properties in Baie-D’Urfé have more than five ash trees.

FIGURE 12 - ASH TREE DISTRIBUTION IN THE INDUSTRIAL SECTOR, PRIVATE INVENTORY – EXCLUDING ASH TREES LOCATED IN WOODED AREAS (JANUARY 2015)



This figure demonstrates that approximately 74% non-wooded industrial properties are not affected by the ash borer problem since no ash trees grow on these private properties.

The following table provides the analyses extracted from the inventory of private trees:

TABLE 8 - ANALYSES EXTRACTED FROM THE INVENTORY OF PRIVATE ASH TREES

| | TOTAL NUMBER OF PROPERTIES | Properties with 5 and more ash trees | Number of ash trees affected | Properties with 10 and more ash trees | Number of ash trees affected | Properties with 25 and more ash trees | Number of ash trees affected |
|---|----------------------------|--------------------------------------|------------------------------|---------------------------------------|------------------------------|---------------------------------------|------------------------------|
| RESIDENTIAL TOTAL | 1357 | 144 | 1865 | 66 | 1367 | 15 | 630 |
| Non-wooded | 1355 | 142 | 1779 | 64 | 1281 | 14 | 565 |
| Wooded | 2 | 2 | 86 | 2 | 86 | 1 | 65 |
| INDUSTRIAL TOTAL | 91 | 28 | 976 | 25 | 953 | 15 | 768 |
| Non-wooded | 74 | 11 | 134 | 8 | 111 | 1 | 28 |
| Wooded (including Hydro-Québec) | 17 | 17 | 842 | 17 | 842 | 14 | 740 |
| TOTAL PRIVATE | 1448 | 172 | 2841 | 91 | 2320 | 30 | 1398 |
| TOTAL PRIVATE and HYDRO-QUÉBEC (NON-WOODED) | 1429 | 153 | 1913 | 72 | 1392 | 15 | 593 |

The following conclusions can be drawn from this table:

- I. There are 172 properties (144 residential and 28 industrial) with 5 or more ash trees. As a percentage, these properties comprise 11.9% of all properties (both residential and industrial) in the Town.

If lots with wooded areas are excluded, 153 properties have 5 or more ash trees. As a percentage, these properties comprise 10.7% of all properties (both residential and industrial) in the Town.

- II. Ninety-one properties (66 residential and 25 industrial) have 10 or more ash trees. As a percentage, these properties comprise 6.3% of all properties (both residential and industrial) in the Town.

If lots with wooded areas are excluded, 72 properties have at least 10 ash trees. As a percentage, these properties comprise 5% of all properties (both residential and industrial) in the Town.

- III. There are 30 properties (15 residential and 15 industrial) with at least 25 ash trees. As a percentage, these properties comprise 2.1% of all properties (both residential and industrial) in the Town.

If lots with wooded areas are excluded, only 15 properties have 25 or more ash trees. As a percentage, these properties comprise 1% of all properties (both residential and industrial) in the Town.

FIGURE 15 - INFESTATION ZONES ON RUE OXFORD AND RUE CAMBRIDGE (OCTOBER 2014)



This figure presents the portion of the map showing the third and fourth infestations recorded within the Baie-D'Urfé town limits.

3. BAIE-D'URFÉ'S STRATEGY

WHEREAS since the appearance of the emerald ash borer in North America in 2002, 80 million ash trees have been destroyed;

WHEREAS the emerald ash borer was first observed on the Island of Montreal in 2011;

WHEREAS several major infestation sites were identified in several different locations in the Town of Baie-D'Urfé at the end of 2014;

WHEREAS the emerald ash borer is difficult to detect in the early stages of infestation since it begins in upper branches, and the infestation often shows no symptoms visible from a distance until the infestation is very advanced;

WHEREAS during an infestation, insect dispersal may be limited to trees located within a one-hundred-metre radius, or extend to trees within a one-kilometre radius;

WHEREAS the infested trees discovered in Baie-D'Urfé at the end of 2014 were sufficiently damaged that it can be concluded they had been infested for more than a year, and consequently, adult insects had dispersed;

WHEREAS other jurisdictions currently affected by the emerald ash borer have chosen to build their strategies on the presumption that their entire communities are infested;

WHEREAS it has been shown that ash trees infested by the emerald ash borer perish within a five to seven-year period;

WHEREAS a small proportion of ash trees can survive (less than 10%);

WHEREAS the massive and rapid loss of ash trees would signify:

- A significant loss of quality of life for residents;
- Damage to the aesthetic qualities of neighbourhoods;
- A reduction in the tree canopy and a *de facto* increase in heat islands;
- A decrease in air quality;
- A decrease in rainwater retention capacity.

The strategy is designed to manage the emerald ash borer in the Town of Baie-D'Urfé. It is based on a determination that the infestation is present throughout the Town. Consequently, the following proposals are designed to allow for management of an existing infestation and not to prevent a potential infestation.

These proposals are based on the fact that the majority of ash trees, if not treated, will die within a period of five to seven years.

Baie-D'Urfé's strategy is based on the following elements:

- A. Insect detection;
- B. Information and awareness campaign;
- C. A strategy to treat and remove ash trees from public property;
- D. A strategy to treat and remove ash trees from private property;
- E. Adoption of a bylaw for private property;
- F. Management of ash tree waste;
- G. Replacement of felled trees, and;
- H. Research and development related to the fight against the emerald ash borer.

The strategy is described in the following pages.

3.1 INSECT DETECTION

Given the limited resources of the Town of Baie-D'Urfé, in terms of both budget and human resources available to meet demand, insect screening will be limited to the debarking method.

The detection program will have two components:

1. Systematic debarking of every public ash tree removed.
2. Systematic debarking of every felled private ash tree with a diameter of 10 cm or greater (31.4 cm circumference), according to the conditions required to obtain a certificate of authorization.

Debarking will continue until the ash population has greatly diminished.

3.2 INFORMATION AND AWARENESS CAMPAIGN

The citizen information and awareness strategy contains seven components:

- i. Information sessions
 - A. Spring 2015
Presentation of the Town of Baie-D'Urfé's strategy against the emerald ash borer to citizens
 - B. Spring 2015
Presentation of the new emerald ash borer regulation affecting property-owners with 10 ash trees or more on their property. Explanations regarding the requirement to submit a management plan for ash trees located on private property.
 - C. Spring 2015
Presentation of the Town of Baie-D'Urfé's strategy against the emerald ash borer to users of the industrial sector.
 - D. Any other information session deemed necessary during the process to fight the emerald ash borer.

ii. Communications related to infestations

Information about new infestations appearing in Baie-D'Urfé will be communicated to citizens through two principal media:

A. Website

A special section of the Town's website is being developed so that new information can be published in real time.

B. The protected message board outside of Town Hall

The message board outside of Town Hall, which is currently used to inform citizens of the agenda for upcoming Town Council Meetings will also contain up-to-date information about new infestations in Baie-D'Urfé.

iii. Creation of print materials for citizens

A. Pamphlet on the strategy against the emerald ash borer

A pamphlet on the strategy against the emerald ash borer will be created in spring 2015 to respond to the needs of citizens regarding the Town of Baie-D'Urfé's commitments.

B. Tools for residents who are required to provide a management plan for ash trees located on private property.

A brochure, as well as an outline of an ash tree management plan in PDF format, will be provided to owners of properties where new regulations will require such a plan. Note that help from the Environmental Coordinator will also be available.

C. Any other print document necessary during the fight against the emerald ash borer.

iv. Assign a staff person to everything related to the emerald ash borer.

In July 2014, the Town of Baie-D'Urfé created an *Environmental Coordinator* position, much of whose mandate relates to managing the strategy against the emerald ash borer.

v. Creation of an Emerald Ash Borer Committee

In May 2014, the Town of Baie-D'Urfé, mandated by Council, established an Emerald Ash Borer Committee to address all of issues and challenges related to the invasive insect. The members of this Committee are:

1. Maria Tutino, Mayor, Committee Chair
2. Emmanuelle Jobidon, Environmental Coordinator
3. Jim Fyles, Baie-D'Urfé resident and Professor, Department of Natural Resources, McGill University
4. Isabelle Bisson, Baie-D'Urfé resident and biologist
5. Viviane Proulx, Baie-D'Urfé resident and an engineer by training

vi. Creation of the *Baie-D'Urfé Ash Squad*

In spring 2014, the Town of Baie-D'Urfé launched a call for volunteers to help produce the inventory on private land. That was when the *Baie-D'Urfé Ash Squad* was created; a group of 27 volunteers who walked up and down the streets of the Town to provide as accurate a portrait of the Municipality as possible.

The Baie-D'Urfé Ash Squad will be reformed in September 2015, and every following September, as needed, to carry out visual inspections. The squad will focus on the private ash tree canopy and record ash trees that have lost 30% of more of their canopy.

vii. *News and Views* monthly magazine

Beginning in January 2015, the *Environment* section of *News and Views*, the monthly magazine for Baie-D'Urfé residential and industrial property-owners, includes a permanent item on the emerald ash borer.

3.3 STRATEGY TO TREAT AND REMOVE ASH TREES FROM THE PUBLIC DOMAIN

As of January 31, 2015, Baie-D'Urfé had 2724 public ash trees. In order to illustrate the strategies the Municipality plans to use, here again are the categories used to classify public ash trees, as well as their numbers.

TABLE 9 – CLASSIFICATION CATEGORIES FOR PUBLIC ASH TREES

| ASH TREE CATEGORY | NUMBER |
|-----------------------------------|--------|
| Ash trees treated in 2014 | 70 |
| Ash trees to treat in 2015 | 150 |
| Ash trees located in wooded areas | 2127 |

3.3.1 STRATEGY TO TREAT ASH TREES LOCATED ON THE PUBLIC DOMAIN

The Town of Baie-D’Urfé will treat a total of 220 ash trees.

TABLE 10 – PUBLIC ASH TREES THAT WILL BE TREATED

| CATEGORY OF ASH TREES TO BE TREATED | NUMBER |
|--|--------|
| Ash trees to be treated during even-numbered years | 70 |
| Ash trees to be treated during odd-numbered years | 150 |

Excluding ash trees located in wooded areas, 37% of public ash trees will be treated by the Town.

Residents who want to treat a public tree located in the setback of their property may be able to receive the same subsidy from the Town as is applicable to private ash trees. See Section 3.4.

These treatments will only buy time while trees planted as replacements can increase in height. The Town of Baie-D’Urfé plans to treat trees until 2019, unless an event arises requiring a revision in the strategy. In 2020, the ash tree management strategy will be reviewed so that it can be adapted to new discoveries and realities.

3.3.2 STRATEGY TO REMOVE ASH TREES LOCATED ON THE PUBLIC DOMAIN

Public domain ash trees have been divided into three categories, i.e. those located in park woods and other wooded areas, as well as along streets, including setbacks, and in parks. It is important to understand the difference among the categories because the trees will be removed according to different strategies.

TABLE 11 – CATEGORIZATION OF PUBLIC ASH TREES FOR SUBSEQUENT REMOVAL

| ASH TREE CATEGORY | NUMBER |
|---|-------------|
| Ash trees located in parks and along streets | 377 |
| Ash trees located in park woods | 349 |
| Ash trees located in other wooded areas | 1778 |
| TOTAL NUMBER OF ASH TREES TO BE FELLED | 2504 |

The removal strategy will be deployed over different years, depending on the categories.

The removal strategy for ash trees located in parks and along streets will be deployed over five years, so as to avoid inconvenience from tree felling operations, and to stagger costs. The removal strategy for ash trees located in park woods will be deployed over seven years, because it is important to take safety into account but also because it is important to stagger expenditures. Finally, the strategy for removing trees in other wooded areas will be developed during the next year.

Here is the public ash tree felling plan:

TABLE 12 – PUBLIC ASH TREE FELLING PLAN

| YEAR | NUMBER OF TREES TO BE REMOVED FROM PARKS AND STREETS | NUMBER OF TREES TO BE REMOVED FROM PARK WOODS |
|------|--|---|
| 2015 | 76 | 50 |
| 2016 | 76 | 50 |
| 2017 | 76 | 50 |
| 2018 | 76 | 50 |
| 2019 | 73 | 50 |
| 2020 | N/A | 50 |
| 2021 | N/A | 49 |

Note that, to reduce the cost of the work, whenever possible, internal resources will be used for the wooded culling strategy (annual removal of a number of ash trees), as well as to remove trees from public property.

3.4 STRATEGY TO TREAT AND REMOVE ASH TREES FROM PRIVATE PROPERTY

As of January 31, 2015, Baie-D’Urfé had 3300 private ash trees. Of these 3330, 2499 private trees are located on non-wooded properties (2347 in the residential sector and 152 in the industrial). Since the Town assumes that all of Baie-D’Urfé is infested, unless these trees are treated, they will be removed from the canopy over the coming years. This could have a dramatic impact on the quality of life for Baie-D’Urfé citizens.

While ash trees grow on only 34% of residential and industrial properties, the Town assumes that the problem is not limited to these lots. The article *The Relationship Between Trees and Human Health: The Evidence from the Spread of the Emerald Ash Borer* describes the human health effects of the canopy loss due to the emerald ash borer. The study is based on results from 15 U.S. states. The researchers concluded that: “Tree loss from the spread of the emerald ash borer is associated with increased mortality related

to the cardio-vascular and lower-respiratory systems²". Also, while only 34% of properties have ash trees, the Municipality is trying to protect the public health of 100% of Baie-D'Urfé residents and workers. By providing a general distribution of trees to maintain the canopy on private property, the city is committed to maintaining the quality of life for which Baie-D'Urfé has always been known.

The support strategy for citizens (residential, industrial, commercial and institutional sectors) contains three components:

- 1) Aid in the form of subsidies to treat ash with biopesticides;
- 2) Aid in the form of subsidies to remove ash trees;
- 3) Aid in the form of tree distribution to all Baie-D'Urfé citizens who request them.

The next Section deals with the first two components of the citizen assistance strategy, i.e. financial support for treatment and the removal of ash trees on private property. Tree distribution will be discussed in Section 3.8, Replacement of felled trees.

The Town of Baie-D'Urfé has established a financial assistance program for citizens who want to treat their ash tree with a product approved in Canada, or who want to remove them. This subsidy program will be available for a five-year period, from 2015 to 2019. It will also be retroactive. Citizens who have removed or treated trees in 2014 will be contacted once the strategy has been adopted.

The financial assistance program applies only to ash trees of a diameter of 25 cm or greater (78.5-cm circumference), measured 1.10 metres from the ground.

TABLE 13 - SUBSIDY PROGRAM FOR ASH TREE OWNERS

| TYPE OF SUBSIDY | SUBSIDY PER TREE, 25 CM OR GREATER | MAXIMUM SUBSIDY PER TREE |
|---|---------------------------------------|--------------------------|
| SUBSIDY TO TREAT ASH TREES WITH BIOPESTICIDES | 50% OF THE PRICE OF INITIAL TREATMENT | \$250 |
| SUBSIDY TO REMOVE ASH TREES | 50% OF THE PRICE TO REMOVE A TREE | \$125 |

The Town of Baie-D'Urfé also seeks to help citizens obtain better prices for biopesticide treatments and tree felling. To this end, the possibility of exclusive contracts with certain suppliers will be studied to negotiate better prices for citizens.

² Donovan et al., The Relationship Between Trees and Human Health: The Evidence from the Spread of the Emerald Ash Borer, Am J Prev Med 2013;44 (2):139-145.

3.5 ADOPTION OF A BY-LAW FOR PRIVATE PROPERTIES

In March 2015, the Town of Baie-D'Urfé adopted a by-law (By-law No.875-107) to manage ash trees on private property. It covers the removal and pruning of ash trees, the management of ash tree waste and pesticide treatment. The by-law contains sanctions and penalties for citizens who violate its provisions. It also requires that citizens who have 10 or more ash trees on their properties develop an ash tree management plan.

A copy of this by-law can be found in Appendix 3. Appendix 3 also contains a copy of By-law No. 878-22, which stipulates that an ash tree removal authorization certificate can be requested at no charge. Finally, it includes a copy of By-law No.875-106, specifying the fine if a citizen removes an ash tree without an authorization certificate.

3.6 MANAGEMENT OF ASH TREE WASTE

Management of ash tree waste is a key weapon against the emerald ash borer. As specified by the *Conseil québécois des espèces exotiques envahissantes*, management of ash wood by municipalities is one of the most effective means to slow the spread of the emerald ash borer.

3.6.1 MANAGEMENT OF ASH TREE WASTE IN THE PUBLIC DOMAIN

In collaboration with the Communauté métropolitaine de Montréal, the Town of Baie-D'Urfé has adopted effective ash waste management methods, as suggested by the Canadian Food Inspection Agency (CFIA).

All branches less than 20 cm in diameter (62.8-cm circumference) will be chipped on-site using a CFIA-approved chipper. This kind of unit produces 2.5 cubic-centimetre chips.

For branches and trunk parts 20 cm and greater in diameter (62.8-cm circumference):

1. From October 2 to March 14, inclusively, they will be sent to an authorized treatment site by the Municipality in the 15 days following the felling or removal work.
2. From March 14 to October 1, inclusively, they will be stored in the Public Works yard, or any other site as determined, until October 2 inclusively, to then be transported within the following 15 days, to an authorized treatment site.

3.6.2 MANAGEMENT OF ASH TREE WASTE FROM PRIVATE PROPERTY

See By-law No. 875-107 in Appendix 2.

3.7 POTENTIAL USE OF ASH WOOD

The Town of Baie-D'Urfé is aware of the fact that major quantities of ash wood will become available in a short time period. The Municipality thinks it is important to seize the opportunity and determine how value may be extracted from the wood.

As of yet, no turnkey solution exists for exploiting ash wood. Inevitably, local needs will have to be followed to limit the costs of transportation and obtain value. Also, the choice of methods will depend on other important factors: volume of wood collected, boundaries of the emerald ash borer regulation zone, costs, etc.

The Town of Baie-D'Urfé is committed to working with the Communauté métropolitaine de Montréal (CMM) and the Montreal Agglomeration on obtaining value from ash wood by:

1. Producing an accurate evaluation of the general situation (wood volumes and fluctuations).
2. Determining possible opportunities (products and buyers).
3. Establishing an efficient system (information, transportation).
4. Informing stakeholders of efforts made and their potential roles.

3.8 REPLACEMENT OF FELLED TREES

Replacing felled trees is a priority for the Town of Baie-D'Urfé. In 2011, with 32.5% tree canopy coverage in the residential sector, the Town was ranked fifth on the island; and second for its industrial sector, with 9.8%. These figures demonstrate the importance of trees within the Municipality.

With the gravity of the reforestation effort demonstrated, an extremely important principal will be applied prior to planting a tree: a good understanding of the condition of the site where it is to be planted. In other words, Baie-D'Urfé's motivation will be the following: "The right tree in the right place." Each species is different and has its own requirements for growth.

The second major principle to be respected by the Town of Baie-D'Urfé is that of diversity. The emerald ash borer has been able to seriously attack the Town today because of a lack of tree diversity in Baie-D'Urfé, due to monoculture on some streets and the high proportion of trees of the same species planted in the Town. In order to prevent other ecological catastrophes of the same scale from occurring, the Town commits to respecting diversity.

3.8.1 REPLACEMENT OF FELLED PUBLIC ASH TREES

The Town of Baie-D'Urfé commits to replacing each public ash tree felled on streets and in parks. When possible, the tree will be placed where the ash tree was removed. If this is impossible, a site near the

original site will be chosen, to keep the same tree canopy index. Also, in addition to replacing each felled tree, the Town of Baie-D’Urfé wishes to increase its canopy index; that is why at least 10 additional trees were be planted on the streets each year.

Tree planting in the public domain, outside of the woods, will occur according to a five-year plan, i.e., from 2015 to 2019.

Regarding wood parks, approximately 15 trees will be planted each year, at the discretion of the Town, to replace those removed. Fewer trees are to be planted in the woods because growing conditions are more difficult. It will be important, however to plant in wooded areas to fight against the spread of invasive exotic species.

Tree planting in wood parks, will occur according to a seven-year plan, i.e., from 2015 to 2021, in order to follow the removal program.

TABLE 14 - REPLACEMENT PLAN FOR FELLED PUBLIC ASH TREES OTHER THAN IN WOODED AREAS

| YEAR | NUMBER OF TREES TO BE PLANTED IN PUBLIC DOMAIN (PARKS AND STREETS) | NUMBER OF TREES TO BE PLANTED IN WOOD PARKS |
|------|--|---|
| 2015 | 90 | 15 |
| 2016 | 90 | 15 |
| 2017 | 90 | 15 |
| 2018 | 90 | 15 |
| 2019 | 90 | 15 |
| 2020 | N/A | 15 |
| 2021 | N/A | 15 |

Trees to be planted along streets in the public domain will be of a good diameter. Trees to be planted in wood parks will have smaller diameters.

3.8.2 REPLACEMENT OF FELLED PRIVATE ASH TREES

The Town of Baie-D’Urfé encourages all citizens to replace every two ash trees removed by at least one new tree or shrub. Not only does the Town hope that trees are replaced in both the residential and industrial sectors, it also seeks to ensure the tree canopy is not reduced over the coming years. That is why it has implemented a tree planting program for private property; the program will continue for five years. All property-owners are included in the program, which consists of a tree give-away held twice a year.

The planting program, which addresses the residential, industrial, commercial and institutional sectors, is described in the following table:

TABLE 15 – PRIVATE PROPERTY TREE PLANTING PROGRAM

| TREE DISTRIBUTION DATE | NUMBER OF TREES TO BE DISTRIBUTED BY THE MUNICIPALITY |
|------------------------|---|
| Spring 2015 | 250 trees |
| Fall 2015 | 250 trees |
| Spring 2016 | 250 trees |
| Fall 2016 | 250 trees |
| Spring 2017 | 250 trees |
| Fall 2017 | 250 trees |
| Spring 2018 | 250 trees |
| Fall 2018 | 250 trees |
| Spring 2019 | 250 trees |
| Fall 2019 | 250 trees |

All Baie-D’Urfé property-owners can use the tree planting program for private property, both those who own ash trees and those who do not have any on their lots. During each distribution period, 10 different tree and shrub species will be provided to property-owners. This distribution, whose purpose is to increase biodiversity in the Town, will be available to the industrial sector as much as the residential, as well as to the commercial and institutional sectors. The exact distribution dates will be publicized to citizens via *News & Views*, the website and the electronic billboard.

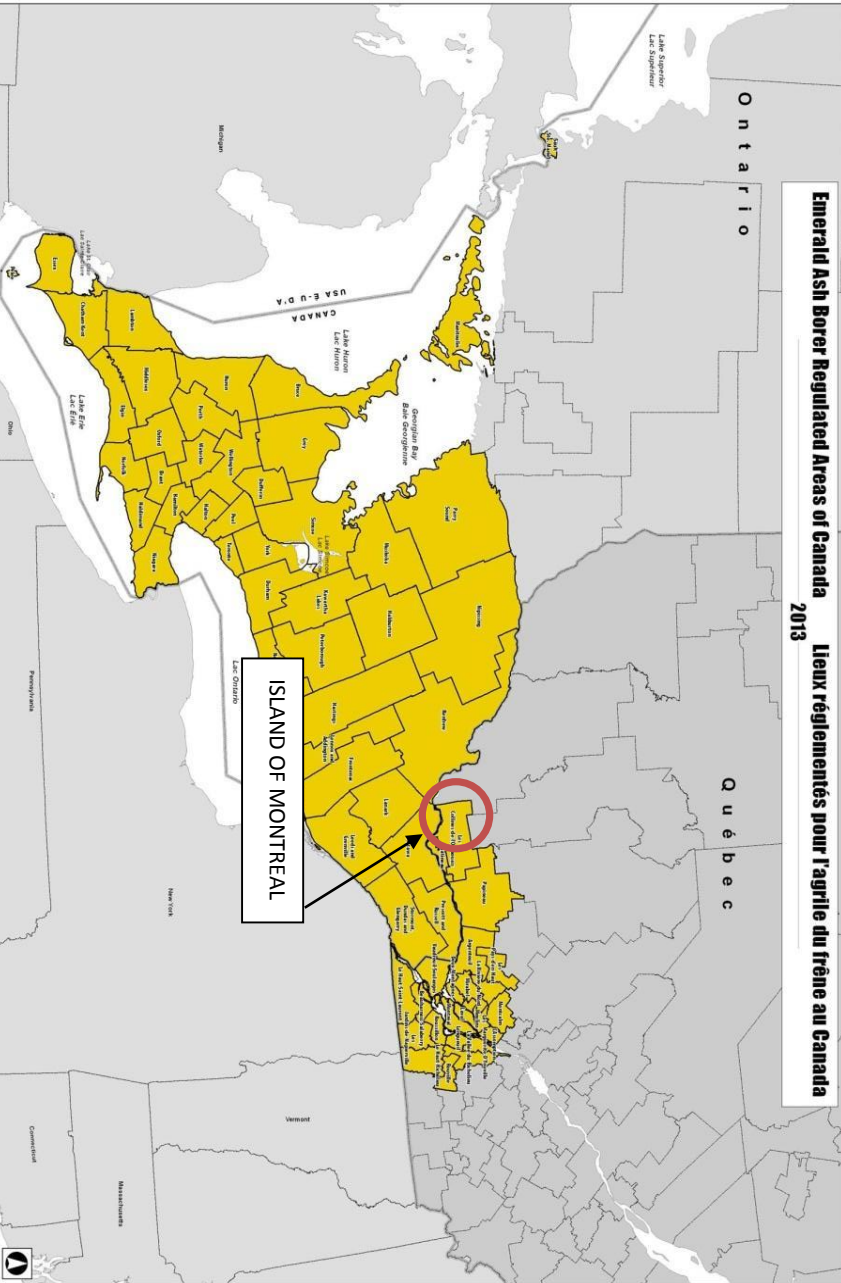
3.9 RESEARCH AND DEVELOPMENT

The Town of Baie-D’Urfé wants to be proactive regarding research and development on the emerald ash borer problem. That is why the Municipality is negotiating with certain institutions and continues to discuss various projects in the Emerald Ash Borer Committee.

APPENDIX 1

MAP OF EMERALD ASH BORER REGULATED AREAS OF CANADA

Emerald Ash Borer Regulated Areas of Canada 2013
Lieux réglementés pour l'agrile du frêne au Canada 2013



LEGEND | LÉGENDE
 Areas regulated | Lieux réglementés

Produced by the Canadian Food Inspection Agency, MapInfo and GIS Services, London, Ontario. Map Projection: UTM 18Q UTM 83 Zone 17.
 Produit par l'Agence canadienne d'inspection des aliments, Cartographie et services SIG, London, Ontario. Projection cartographique: UTM 18Q UTM 83 Zone 17.

V100 - 2013
 M001 - 00
SCALE | ÉCHELLE




APPENDIX 2

CARTOGRAPHY

INVENTORY OF PRIVATE AND PUBLIC ASH TREES

INVENTORY OF ASH TREES 2014 TOWN OF BAIE-D'URFÉ



APPENDIX 3

ASH TREE REGULATIONS:

BY-LAW No. 875-106

BY-LAW No. 875-107

BY-LAW No. 878-22



BY-LAW NO. 875-106 | FINAL

By-law no. 875-106 amending Zoning By-law no. 875, as already amended, in order to authorize the issuance of a certificate of authorization for the felling of ash trees.

Regular meeting of the Municipal Council of the Town of Baie-D'Urfé, held according to the law at the Town Hall, ordinary place of meetings, on Tuesday, September 9, 2014, at 7:30 p.m.

WERE PRESENT:

Mayor: Maria Tutino

Councillors: Peter Fletcher

Brian Manning

Lynda Phelps

Janet Ryan

ALSO PRESENT:

Nathalie Hadida, Director General

Marie-Hélène Bourque, Town Clerk

Alexandra Hobson, Assistant Town Clerk

Stéphane Patenaude, Director of Public Works

WERE ABSENT:

Michel Beauchamp, Councillor

Charles Colomb, Councillor

WHEREAS the presence of the emerald ash borer on the territory of the Town requires that aggressive measures be taken to limit and contain its spread;

WHEREAS the Town wishes to simplify the issuance of certificates of authorization for the felling of ash trees;

WHEREAS notice of motion for the presentation of this by-law was given at a regular meeting of Council held on August 12, 2014 at 7:30 p.m.;

WHEREAS draft by-law no. 875-106 was adopted on August 12, 2014 at 7:30 p.m. and submitted to a public consultation on September 9, 2014 at 7 p.m.; and

WHEREAS Council declares having read by-law no. 875-106 and hereby dispenses with the reading of said by-law;

THEREFORE, it is moved by Councillor Brian Manning, seconded by Councillor Janet Ryan and UNANIMOUSLY RESOLVED:

THAT by-law no. 875-106 be, and is hereby adopted; and

THAT it be enacted and decreed as follows:

SECTION 1 Section 5.5 – PRESERVATION AND REPLACEMENT OF TREES

1.1 Paragraph a) is modified by the addition of a second paragraph to read as follows:

In the particular situation of an ash tree, a certificate of authorization is required for trees of more than 10 cm (4") in diameter, measured 1.3 m (4.27') from the ground.

1.2 Paragraph b) is modified by the addition of a ninth bullet to read as follows:

- The tree to be felled is an ash tree, as confirmed by a municipal employee.

SECTION 2 Section 1.5 – VIOLATION, PENALTIES AND OTHER RECOURSES – paragraph a) is modified by the addition of a second paragraph to read as follows:

In the case of the felling of any species of tree on the territory of the Town without the prior issuance of a valid certificate of authorization, anyone contravening a provision of this by-law, or tolerating or permitting such a contravention, commits an infraction and is liable to a fine, and such fine shall be of a minimum of six hundred dollars (\$600) or a maximum of twelve hundred dollars (\$1200).

Notice of motion: August 12, 2014

Adoption of draft: August 12, 2014

Public consultation meeting: September 9, 2014

Adoption of by-law: September 9, 2014

Coming into force: September 17, 2014

TRUE CERTIFIED COPY

Mayor

Town Clerk



BY-LAW NO. 875-107 | FINAL

By-law no. 875-107 amending Zoning By-law no. 875, as already amended, in order to implement an Emerald Ash Borer management strategy.

Regular meeting of the Municipal Council of the Town of Baie-D'Urfé, held according to the law at the Town Hall, ordinary place of meetings, on Tuesday, March 10, 2015, at 7:30 p.m.

WERE PRESENT:

Mayor: Maria Tutino

Councillors: Michel Beauchamp
Charles Colomb
Peter Fletcher
Brian Manning
Lynda Phelps
Janet Ryan

ALSO PRESENT: Nathalie Hadida, Director General
Marie-Hélène Bourque, Town Clerk
Stéphane Patenaude, Director of Public Works

WHEREAS since the appearance of the emerald ash borer in North America in 2002, 80 million ash trees have been destroyed;

WHEREAS the emerald ash borer was first spotted on the island of Montreal in 2011;

WHEREAS several major infestation sites were identified in various areas within the Town of Baie-D'Urfé at the end of 2014;

WHEREAS the emerald ash borer is difficult to detect in the early stages of infestation because it first appears in the higher branches and often shows no symptoms visible from a distance until the advanced stages of infestation;

WHEREAS the spread of insects during an infestation may be confined to trees within a one hundred meter radius or stretch to trees within a one kilometer radius;

WHEREAS the infested trees discovered in Baie-D'Urfé at the end of 2014 were sufficiently damaged so that it may be presumed that they had been infested for more than a year, and that, consequently, there has been a spread of adult insects;

WHEREAS municipalities currently affected by the emerald ash borer, including Baie-D'Urfé, have chosen to build their strategy based on the presumption that their entire territory is infested;

WHEREAS it has been shown that ash trees infested by the emerald ash borer perish within a five to seven year period;

WHEREAS a small portion of ash trees can survive an infestation (less than 10%);

WHEREAS a massive and swift loss of ash trees would entail:

- A significant loss of quality of life for residents;
- Damage to the esthetics of the neighbourhoods;
- A reduction of the canopy and a de facto increase in heat islands;
- A decrease in air quality;
- A decrease in rainwater retention capacity;

WHEREAS notice of motion for the presentation of this by-law was given at a regular meeting of Council held on December 9, 2014 at 7:30 p.m.;

WHEREAS draft by-law no. 875-107 was adopted at a regular meeting of Council held on February 10, 2015 at 7:30 p.m. and submitted to a public consultation on March 10, 2015 at 7 p.m.; and

WHEREAS Council declares having read by-law no. 875-107 and hereby dispenses with the reading of said by-law;

THEREFORE, it is moved by Mayor Maria Tutino, seconded by Councillor Charles Colomb and RESOLVED:

THAT by-law no. 875-107 be, and is hereby adopted; and

THAT it be enacted and decreed as follows:

SECTION 1 Appendix 1 – DEFINITIONS – is modified by the addition of two definitions to be inserted in the correct alphabetical order as follows:

ASH TREE RESIDUE:

Pieces of ash trees such as branches and logs, excluding shavings not exceeding 2.5 cm in size on at least two (2) sides, resulting from a chipping operation.

APPROVED PROCESS:

Processing techniques for ash tree residue which completely destroy the emerald ash borer or the parts of the wood where the insect can dwell. Ex: torrefaction, methyl bromide fumigation, the removal and chipping of the part of the ash tree wood that can contain the emerald ash borer (*Agrilus planipennis*), etc.

SECTION 2 Section 5.5 – PRESERVATION AND REPLACEMENT OF TREES – is modified by the addition of the following sections and articles:

5.5.3 FELLING OF ASH TREES

5.5.3.1 No fee is required in order to obtain a certificate of authorization for the felling of an ash tree.

5.5.3.2 In the case of an authorized felling, the property owner must, in all cases, provide the Town, within two (2) business days following the felling of the tree, two (2) distinct branches, 3 cm to 10 cm in diameter (circumference of 9.42 cm to 31.4 cm) and 45 cm to 60 cm in length, cut from the highest part of the felled tree, preferably from the south side of the tree.

5.5.3.3 The owner of a dead ash tree, or of an ash tree of which 30% or more of the branches are dead, must proceed with, or see to the felling of the ash tree before the 31st of December of the year during which the state of the tree is determined.

The owner is not required to fell an ash tree on his property if he can demonstrate, by way of the recognized document, that the ash tree has been treated against the emerald ash borer over the current or previous calendar year with a pesticide which has an effective life span of two (2) years. In the case where such a treatment has been used, the property owner must provide the municipality with a recognized document attesting to the treatment of the trees in question in the fifteen (15) days following the request of the Town.

For the purpose of the present section, invoices for the treatment of ash trees through the use of a pesticide registered in Canada against the emerald ash borer in accordance with the Pest Control Products Act (S.C. 2002, c. 28) by a business having the required permits and certificates to carry out this work, in accordance with the *Regulation respecting permits and certificates for the sale and use of pesticides* (L.R.Q. c. P-9.2, r.2), are considered to be recognized documents.

5.5.3.4 No ash tree may be cut down during the period from March 15th to October 1st, inclusively, of each year, unless:

- 1° the ash tree presents a threat to public security;
- 2° the ash tree might cause serious damage to property;
- 3° the ash tree is preventing the realization of a construction project authorized by applicable Town Planning regulation, excluding an advertising sign.

5.5.4 PRUNING OF ASH TREES

5.5.4.1 No ash tree may be pruned during the period from March 15th to October 1st, inclusively, of each year, unless

- 1° the ash tree presents a threat to public security;
- 2° the ash tree might cause serious damage to property;
- 3° the ash tree is preventing the realization of a construction project authorized by applicable Town Planning regulation, excluding an advertising sign.

5.5.5 MANAGEMENT OF ASH TREE RESIDUE

5.5.5.1 All residues resulting from the felling of ash trees are the sole responsibility of the property owner. The disposal of these residues must be carried out according to the Town's instructions, including:

- 1° Branches measuring less than 20 cm in diameter (circumference of 62.8 cm) must be chipped on location by the contractor carrying out the work. The residues resulting from the chipping process must not exceed 2.5 cm in size on at least two (2) sides;

2° Branches or pieces of trunk measuring 20 cm or more in diameter (circumference of 62.8 cm) must be:

a) From October 2nd to March 14th inclusively :

- I. brought to a treatment site approved for this purpose by the municipality within the fifteen (15) days following the felling or pruning work; or
- II. brought to a wood processing company or preserved on location in order to be processed with an approved process which completely destroy the emerald ash borer or the parts of the wood where the insect can dwell within the fifteen (15) days following the felling or pruning work.

b) From March 15th to October 1st, inclusively :

- I. treated on location in order to be treated with an approved process, as defined in the present by-law, or preserved until October 2nd in order to then be transported, within the following fifteen (15) days, in a way and to a location authorized by paragraphs 2a) I) and 2 a) II). The invoice from the business which treated the wood with an approved process as defined in the present by-law must be kept and presented, upon request, to the competent authority.

5.5.5.2 It is not permitted, from October 2nd to March 14th inclusively, to store for more than fifteen (15) days, ash tree residue which has not been treated with an approved process, as defined in the present by-law, without the written permission of a designated municipal employee.

5.5.5.3 It is not permitted, from March 15th to October 1st inclusively, to transport ash tree residue which has not been treated with an approved process, as defined in the present by-law, without the written permission of a designated municipal employee.

5.5.6 TREATMENT OF ASH TREES

5.5.6.1 Notwithstanding the provisions of By-law no. 958 regulating the use of pesticides in the Town of Baie-D'Urfé, the use of an product approved or registered by an agency of

the Government of Canada and applied according to the manufacturer's instructions is permitted within the municipality of Baie-D'Urfé, provided it is used exclusively for the purpose of combatting the emerald ash borer (*Agrilus planipennis*).

5.5.6.2 A citizen making use of a product approved or registered by an agency of the Government of Canada and applied according to the manufacturer's instructions for the purpose of combatting the emerald ash borer must provide a copy of the receipt relating to the treatment to the municipality within thirty (30) days following the treatment.

5.5.7 PRESENTATION OF AN ASH TREE MANAGEMENT PLAN FOR ASH TREES LOCATED ON PRIVATE PROPERTY

A property owner whose property contains ten (10) or more ash trees must present the Town with an ash tree management plan for ash trees located on private property, spanning five (5) years, within ninety (90) days following the request of the municipality. The plan must include the following information:

- 1° The number of ash trees on the property;
- 2° The plan of the property;
- 3° The five (5)-year biopesticide treatment strategy;
- 4° The five (5)-year felling strategy;
- 5° The five (5)-year planting strategy; and
- 6° A proposed plan of the property thereafter.

5.5.8 PLANTING AND CULTIVATION OF ASH TREES

It is not permitted to grow, cultivate or produce ash trees from seeds, by way of transplanting or by any other method.

5.5.9 POWER TO INSPECT

Any civil servant or employee of the Town responsible for the application of the present by-law may enter onto private land in order to carry out an inspection of an ash tree or of wood coming from an ash tree located on the land in order to verify any information or to verify that the present by-law is being respected.

SECTION 3

Section 1.5 – VIOLATION, PENALTIES AND OTHER RECOURSES – the second paragraph of paragraph a) is modified as follows:

Replace: In the case of the felling of any species of tree on the territory of the Town without the prior issuance of a valid certificate of authorization, anyone contravening a provision of this by-law, or tolerating or permitting such a contravention, commits an infraction and is liable to a fine, and such fine shall be of a minimum of six hundred dollars (\$600) or a maximum of twelve hundred dollars (\$1200).

With: In the case of the felling of any species of tree on the territory of the Town without the prior issuance of a valid certificate of authorization, **as well as in the case of pruning or trimming of ash trees during the period of March 15th and October 1st inclusively**, anyone contravening a provision of this by-law, or tolerating or permitting such a contravention, commits an infraction and is liable to a fine of a minimum of six hundred dollars (\$600) or a maximum of twelve hundred dollars (\$1200).

SECTION 4

Section 1.5 – VIOLATION, PENALTIES AND OTHER RECOURSES – paragraph a) is modified by the addition of a third paragraph to read as follows:

An owner of an ash tree identified as dead or as having 30% or more dead branches will be found to have committed an infraction and is liable to a fine of a minimum of six hundred dollars (\$600) or a maximum of one thousand two hundred dollars (\$1200) if he refuses to cut down the ash tree or to have it cut down before December 31st of the year during which the state of the ash tree was determined. Furthermore, failure to provide recognized documents attesting that an ash tree was treated against the emerald ash borer over the current or previous calendar year with a pesticide which has an effective life span of two (2) years, constitutes an infraction subject to a fine of a minimum of six hundred dollars (\$600) or a maximum of one thousand two hundred dollars (\$1200).

Notice of motion: December 9, 2014

Adoption of draft: February 10, 2015

Public consultation meeting: March 10, 2015

Adoption of by-law: March 10, 2015

Coming into force: March 18, 2015

TRUE CERTIFIED COPY

Mayor

Town Clerk



BY-LAW NO. 878-22 | FINAL

By-law no. 878-22 amending Permits and Certificates By-law no. 878, as already amended, in order to detail particular requirements associated with the felling of trees.

Regular meeting of the Municipal Council of the Town of Baie-D'Urfé, held according to the law at the Town Hall, ordinary place of meetings, on Tuesday, September 9, 2014, at 7:30 p.m.

WERE PRESENT:

Mayor: Maria Tutino

Councillors: Peter Fletcher

Brian Manning

Lynda Phelps

Janet Ryan

ALSO PRESENT:

Nathalie Hadida, Director General

Marie-Hélène Bourque, Town Clerk

Alexandra Hobson, Assistant Town Clerk

Stéphane Patenaude, Director of Public Works

WERE ABSENT:

Michel Beauchamp, Councillor

Charles Colomb, Councillor

WHEREAS the presence of the emerald ash borer on the territory of the Town requires that aggressive measures be taken to limit and contain its spread;

WHEREAS the Town requires the tools necessary to identify any tree which could be potentially infected by the emerald ash borer;

WHEREAS notice of motion for the presentation of this by-law was given at a regular meeting of Council held on August 12, 2014 at 7:30 p.m.; and

WHEREAS Council declares having read by-law no. 878-22 and hereby dispenses with the reading of said by-law;

THEREFORE, it is moved by Councillor Brian Manning, seconded by Councillor Janet Ryan and UNANIMOUSLY RESOLVED:

THAT by-law no. 878-22 be, and is hereby adopted; and

THAT it be enacted and decreed by this-by-law as follows:

SECTION 1: Section 1.5 – VIOLATION, PENALTIES AND OTHER RECOURSES – paragraph a) is modified by the addition of a second paragraph to read as follows:

In the case of the felling of any species of tree on the territory of the Town without the prior issuance of a valid certificate of authorization, anyone contravening a provision of this by-law, or tolerating or permitting such a contravention, commits an infraction and is liable to a fine, and such fine shall be of a minimum of six hundred dollars (\$600) or a maximum of twelve hundred dollars (\$1200).

SECTION 2: Section 3.2 – PRESENTATION OF AN APPLICATION FOR A CERTIFICATE OF AUTHORIZATION – paragraph e) is modified by the addition of a third bullet to read as follows:

In the particular case of an ash tree, the applicant must provide to the Town, within two working days after the tree is felled, two distinct branches, three (3) centimeters to ten (10) centimeters in diameter and forty-five (45) centimeters to sixty (60) centimeters in length, cut from the uppermost part of the felled tree, preferably from the south-facing side.

SECTION 3: Section 3.3 – FEES – paragraph c) is modified by the addition of a second paragraph to read as follows:

In the particular case of an ash tree, the permit fee is waived.

Notice of motion: August 12, 2014

Adoption of by-law: September 9, 2014

Coming into force: September 17, 2014

TRUE CERTIFIED COPY

Mayor

Town Clerk