



# MUNICIPAL NEWSLETTER FROM TOWN HALL

## Mayor's Message

◆ ◆ ◆ ◆ Maria Tutino



It is hard to believe that a little over a month ago, on March 11, the *World Health Organization* declared the Coronavirus to be a pandemic disease.


Today about 210 countries are affected by this virus and are 100% preoccupied with fighting this pandemic. The statistics are concerning and every day more and more news comes out that is increasingly serious and troubling.


**Worldwide there are over 2.3 million confirmed cases, 160 000 deaths as of April 18.**

To stop the spread of the coronavirus, we have all been asked to do our part. It has not been easy for anyone regardless of age. People in our community have been encouraged to stay home if over 70 and to go out for urgent matters only. Some of us have been restricted from seeing family members living in senior residences for over a month, which seems like a lifetime for both the parent, the children and grandchildren. Some are seeing their family members, friends and neighbors leave their homes to help provide essential services to the population at large. Holidays are celebrated via teleconferencing with each member enjoying their own food while chatting online.

It is a different world today than it was at the beginning of the year. Funny how some of the essential things in life pre-Covid-19 (material goods, in particular) no longer seem so essential.

For almost five weeks, every effort has been made on a national, provincial and municipal level to try to limit the spread of the coronavirus. But all the efforts to prevent the spreading of the Coronavirus pandemic will not succeed, if residents don't do their part.

 In addition to basic hygiene practices (washing your hands regularly and thoroughly as well as protecting those nearby when coughing or sneezing), two of the most important precautions at the moment are self-isolation and social distancing.

 Limiting physical contact, keeping a minimum of two meters between you and others when you have to go out—these precautions will make a huge difference to the outcome, according to experts.

As of April 18, **8457** cases have been confirmed on the island of Montreal. Baie-D'Urfé has had only **5** cases confirmed since the start and it has been stable at 5 cases now for several weeks.

I want to thank each and every one of you who have self-isolated and respected the social distancing guidelines as recommended by our federal and provincial governments. Thank you for doing your part to control the spread of the virus.

I want to thank all the angels who leave their homes to be on the frontlines of the fight against Covid-19 (those working in the healthcare system, fire and police, caregivers in senior residences, essential service providers in the food and pharmaceutical businesses and all the employees who show up every day to make sure that essential needs are provided). Thank you, we are so appreciative.

I want to thank the many volunteers who have come forward to help the Baie-D'Urfé Community Task Force whether it be to assist with the grocery home delivery system, seniors' shopping hour, emergency operations, town patrols, phone calling services, handmade mask-making, database management, translations, and many other activities. Thank you for generously sharing your talents, energy and time to support the community during this unprecedented challenge and to help keep it safe!

I also want to thank the Administration and Council for their work ensuring that the Town remains open and operations continue to occur in an efficient and safe way for both the residents and Town employees. Thank you to all! These are not easy times to work in when trying to provide essential services to Town residents while also dealing with how to keep one's own family safe. Many, many thanks.

We are all in this together... we are all on the frontlines together. If we all do our individual part, together we will succeed and come out of it better, stronger and more unified as a community.

**Thank you to each of you for taking action, whether it be by directly helping others or by staying at home.**

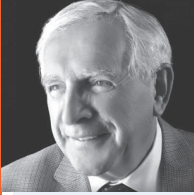


*The views and opinions expressed in this article are those of the author and do not necessarily reflect those of the Municipal Council as a whole.*



# MUNICIPAL NEWSLETTER FROM TOWN HALL

## Council Communiqué



Kevin M. Doherty

One often wonders what to write in their column but today I thought it would be a good idea to talk about our Industrial park. We tend not to think too much about this park as it lies out of our normal range of vision but it is there and is a very important asset to the Town of Baie-D'Urfé. Situated to the north of highway 20 up to Highway 40 and from the borders of Sainte-Anne-De-Bellevue to Beaconsfield.

This Industrial park consists of some **66 buildings** housing approximately **80 companies**. The number of people employed by these various companies total approximately **4300 to 4500 persons**. The last real estate valuation roles (2020-2022) totaled a value of **\$387.3** million.

Companies started opening in this key part of the town in the 1970's. From 1970 to 1979, 4 buildings were built. From 1980 to 1989 a further 30 buildings were built. From 1990 to 1999 another 9 were built and from 2000 to 2015 a further 23 were added to the growing park.

These various companies produce, research and house a variety of products and services. Their talents are many and vary from making bakery products, steel products, construction equipment, rental equipment, products for the making of containers for storing food, essential medical equipment and other types of services. Plus it has a hotel and a soccer dome.

I am writing this article during the COVID-19 pandemic and several of these businesses have had to reduce their operations or cease temporarily following government recommendations. Like many industries elsewhere, many have employees working from the home.

Nonetheless quite a few companies are operating essential services during this pandemic and are supplying much needed material for medical purposes. Some are producing hand sanitizers. Others are making various types of machinery available. One company does the analysis of drinking water, wastewater and agricultural foods. Another produces various tissues for the manufacturer of hospital gowns, masks and mattress material. Some of the essential services supply transport for a variety of materials including for the military. Another essential service provider assures a well-oiled supply line for the transportation of food to villages located in the far North. Last but not least bread and various baked goods are being produced for those restaurants and grocery chains that

are operating during these difficult times. Essential also are electrical company's linked to *Hydro-Québec* operations.

As one can read from the foregoing we have a very active and productive Industrial park even in these difficult times. I will take this opportunity to express thanks to all these industries in the park for their contribution and we look forward to the better times that will allow all industries to reaffirm their full potential.

On a progressive note, which will eventually have positive repercussion for those who commute to and from the Industrial park; At the April 14 Council meeting, it was noted that when things return to normal, a pedestrian bridge over the tracks at highway 20 would be essential. Safety IS our primary concern and the Mayor and I will continue to work with the Provincial Government to advance this project to develop a pedestrian bridge at the Baie-D'Urfé train station located at Morgan. This primary SAFETY initiative, though it will take time, when combined with the REM on highway 40 will

certainly make it much safer for residents and employees to access the Park in a more efficient manner.

I wish all safe harbor during these difficult times and thank you to all the various volunteers that are keeping citizens safe.



I wish all safe harbor during these difficult times and thank you to all the various volunteers that are keeping citizens safe.



### NOTICE TO THE BAIE-D'URFÉ INDUSTRIES

#### Deferral of Property Taxes

Please note that at the last Town Council meeting held April 14, and due to the current COVID-19 situation, the Council adopted a modification to By-law 1070 delaying the date of the **2<sup>nd</sup> Tax Instalment** by one month to **June 25, 2020**. These modifications came into effect Friday, April 17, 2020 and are reflected in **\*By-law 1070-1** of the Town website.

*\*(By-law to amend By-law 1070 imposing the general property tax for 2020 and adopting other fiscal measures - postponement of the payment of municipal taxes).*

The Town Administration

*The views and opinions expressed in this article are those of the author and do not necessarily reflect those of the Municipal Council as a whole.*



Given the current situation regarding the COVID-19, the Town invites you to take note of three (3) following updates:

### 1. Distribution of Compost and Woodchips to our population:

In order to avoid gatherings and limit non-priority services and Town activities, the compost and woodchips distribution will be **suspended** until further notice.



### 2. Hazardous Waste Collection:

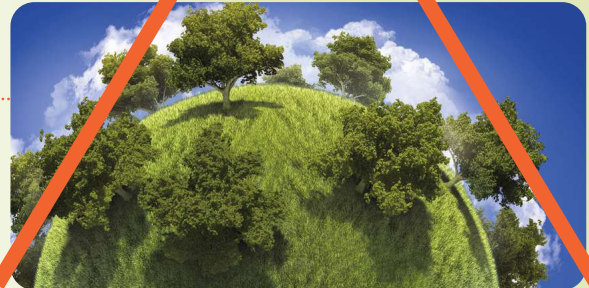
The Hazardous Collection that was scheduled on May 23<sup>rd</sup> has also been cancelled, due to foreseeable risks of people gathering.

This collection may be **postponed** in June or July depending on the evolution of the situation and available dates within our 2020 *Collection Calendar*.



### 3. Tree Distribution:

In order to avoid any gathering of our citizens during this event and limit non-priority services and Town activities, the tree distribution is **suspended** for this spring.



## BRANCH Pick-up and BULKY ITEMS Collection

Barring any changes in the restrictions regarding COVID-19, the branch pick-up and bulky items collection should resume as scheduled after **May 4<sup>th</sup>**. Any changes will be announced on the Town website. Please consult it or call the Public Works department before placing your items at curbside.

Please note that **exceptionally**, all items should be placed at curbside **24 hours** before the collection date. Verify that the items placed at curbside meet the requirements for collection given that our employees will not leave a notice at your door as in the past for the safety and security of all involved. There will be no leniency with regards to the requirements to avoid unnecessary, multiple visits to the same address.



## Baie-D'Urfé Citizens adjusting to the COVID-19 situation

